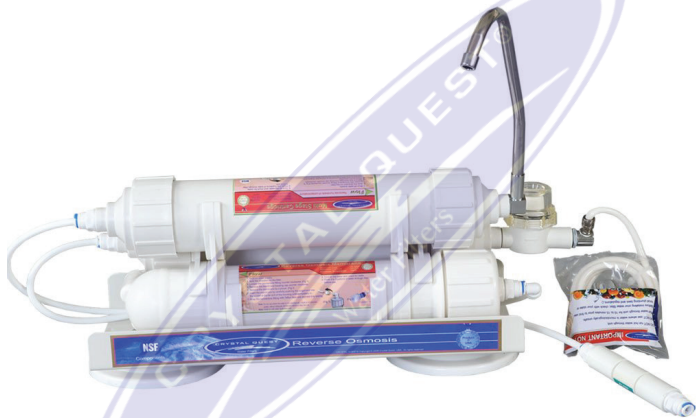




Crystal Quest® Countertop Thunder® Reverse Osmosis System INSTALLATION AND OPERATION GUIDE



ONLINE WARRANTY INFORMATION
CrystalQuest.com/warranty.html

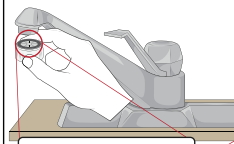
Copyright 2018
Crystal Quest®
All rights reserved
MADE IN THE USA



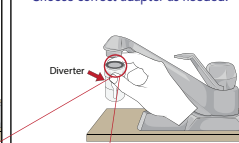
INSTALLATION INSTRUCTIONS

Remove red cap. Follow the instructions below to install your countertop system.

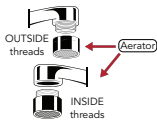
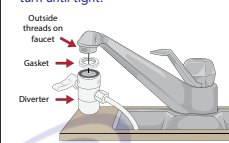
1. Remove the aerator from faucet.



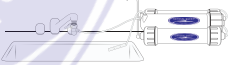
2. Determine the need for an adapter. Choose correct adapter as needed.



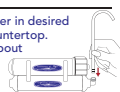
3. Attach the diverter to the faucet and turn until tight.



4. Use the large clamp to tighten unit hose to the faucet.



Place the water filter in desired location on the countertop. Insert spout into spout housing and push it down firmly.



Countertop Thunder® RO System

- 1-Diverter
- 2-Tubing
- 3-Pre-treatment cartridge (activated cartridge)
- 4-Auto shut-off valve
- 5-Membrane
- 6-Post-treatment cartridge
- 7-Spout
- 8-Drain line/flow restrictor
- 9-Pre-filter (optional)

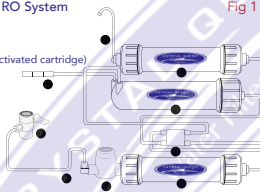


Fig 1

OPERATING SPECIFICATIONS:

Pressure Range: 45 psi and up
Temperature Range: 40°-85° F (4.4-29.4°C)
Optimum Service Flow: 0.30 gpm at 60 psi

CARE AND OPTIMUM USE

1. Use COLD water only. Do not use on hot water. This may damage the cartridges.
2. The contaminants or other substances removed or reduced by this water filter are not necessarily in all users' area.
3. Soak the diverter in a vinegar and water solution once a month. This will clean deposits that form from feed water and help prevent corrosion of internal diverter mechanisms

TROUBLESHOOTING

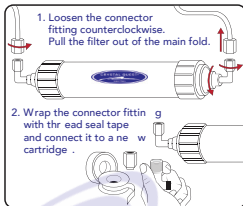
1. Low water pressure or no water flow. Very low water temperatures may cause water flow through membrane to slow or stop. Wait for temperature to rise.
2. High levels of hardness in feed water. A crystallized layer may form around membrane in feed water with high levels of hardness, causing water to flow improperly. Soak membrane in vinegar and water solution for 2 to 3 hours to clean membrane. Rinse thoroughly before using.
3. Exhausted filter cartridges. Exhausted cartridges may clog. If steps above do not bring results, filters should be changed.

IMPORTANT INFORMATION

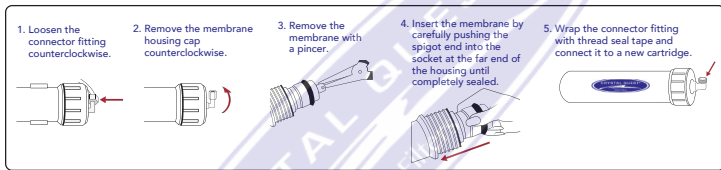
Your Countertop Thunder™ Reverse Osmosis Water Filter system cartridges must be replaced at regular intervals to maintain proper performance.

- The filter cartridges have a limited service life.* Use only factory approved cartridges.
- Changes in taste, odor, and flow of the water being filtered indicate that cartridges should be replaced.
- Do not use non-Crystal Quest® replacement cartridges.
- Do not use non-Crystal Quest® parts or modify/tamper with unit.

*Life of the cartridge varies with water consumption and water condition

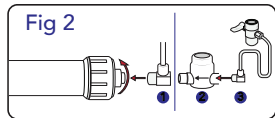


CHANGING MEMBRANE



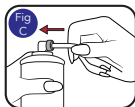
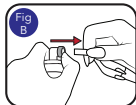
PRE-FILTER INSTALLATION

1. Remove the water inlet elbow from pre-treatment cartridge by turning counterclockwise (Fig 2).
2. Thread male end of pre-filter (Fig 1, #9) into pre-treatment cartridge (Fig 1, #3) and tighten clockwise. You may need to use thread seal tape.
3. Thread previous elbow (Fig 2, #3). Thread tape may be needed.
4. Turn on water supply and run for 2 minutes prior to first use.



QUICK-FITTING

1. Remove security lock from quick fitting (Fig A).
2. Push and hold collet against body while pulling tube out (Fig B).
3. Remove and throw away the used cartridge.
4. Insert the new filter cartridge in the clips.
5. Push the tubing through collet until it seals firmly at bottom of quick fitting (Fig C).
6. Put the quick fitting security lock back.
7. Turn on water and check for leaks.
8. Flush 4-5 gallons of water through filter before use.





ONE-YEAR LIMITED WARRANTY

CRYSTAL QUEST® warrants your CRYSTAL QUEST® Thunder™ Countertop Reverse Osmosis Water Filter for one year from the date of purchase against all defects in materials and workmanship when used in compliance with the manual. CRYSTAL QUEST® disclaims all implied warranties including, without limitation, warranties of merchantability and fitness for a particular purpose. If for any reason the product proves to be defective within one year from the date of purchase (90 days for filter cartridges), please call for assistance. This warranty gives you specific legal rights and you may have other legal rights which vary from state to state. CRYSTAL QUEST® assumes no responsibility for incidental or consequential damages, for damages arising out of misuse of the product, or the use of any unauthorized attachment. Some states do not allow the exclusion or limitation of implied warranties or incidental or consequential damages; therefore, the above limitations of exclusions may not apply to you. Should service be required during or after the warranty period or should you have any questions regarding how to use your CRYSTAL QUEST® Thunder™ Countertop Reverse Osmosis Water Filter, contact our Technical Support Department at service@crystalquest.com, Monday through Friday, 9 A.M. to 5 P.M. Eastern Time.

KEEP THIS MANUAL FOR FUTURE REFERENCE AND UNIT MAINTENANCE

Online warranty information
<http://crystalquest.com/warranty.htm>

Product design is subject to change without notice.

For further assistance, contact your Crystal Quest dealer
or visit us at www.crystalquest.com

To view the latest edition of the Countertop Thunder® Reverse Osmosis System Guide, visit CrystalQuest.com

Please note all drawings, pictures, colors and sizes are approximate for illustrative purposes only and may not exactly resemble the end product.

CQE-CT-00142



7 8 5 0 8 4 0 0 1 4 2 5