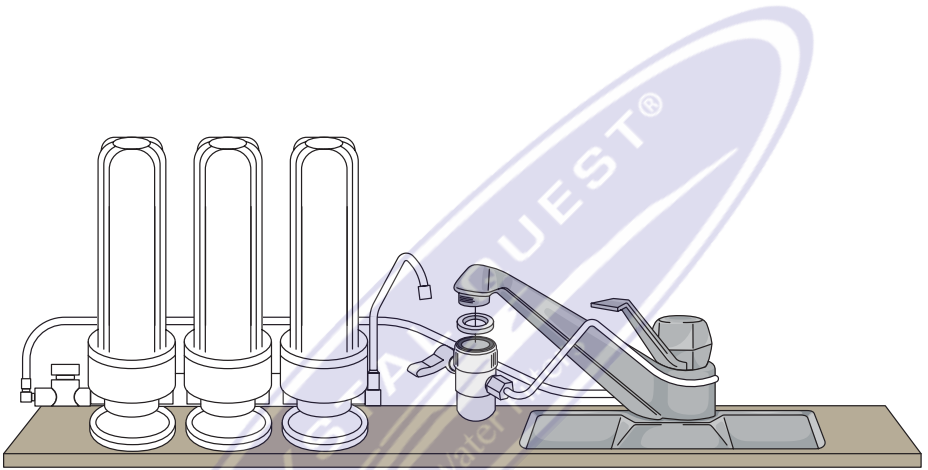




Crystal Quest® Countertop Replaceable Water Filter Systems INSTALLATION AND OPERATION GUIDE



Copyright 2018
Crystal Quest®
All rights reserved
MADE IN THE USA





IMPORTANT INFORMATION

- Please read all instructions and precautions before installing and using your Crystal Quest® Countertop Water Filter.
- Numbered diagrams correspond with numbered steps.
- Use this system on a potable (safe-to-drink) COLD water supply only. Do not install on hot water line.
- Do not use non-Crystal Quest® replacement cartridges.
- Do not use non-Crystal Quest® parts or modify/tamper with unit.

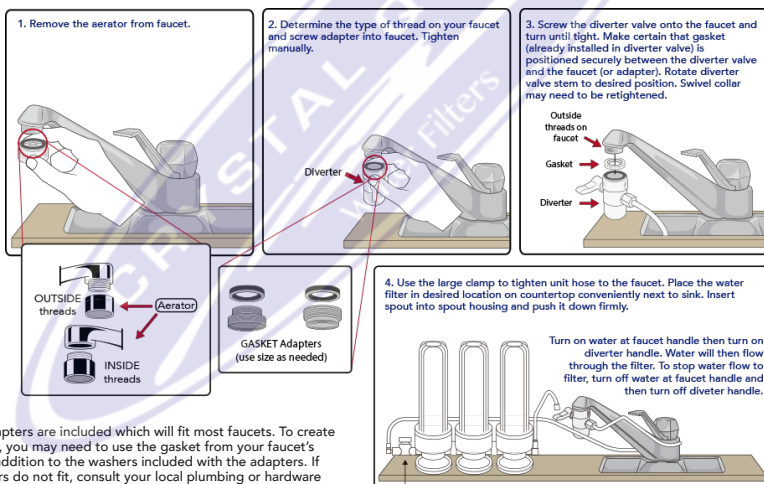
WARNING: Do not use with water that is microbiologically unsafe or of unknown quality without adequate disinfection before or after the system. Systems certified for cyst reduction may be used on disinfected water that may contain filterable cysts.

CAUTION: Filter must be protected against freezing which can cause cracking of the filter and water leakage.

NOTE:

- Filter cartridge life varies depending on filter type, usage, and water conditions. The replacement filter cartridge used with this system has a limited service life. Changes in taste, odor, or reduced flow of the water being filtered can indicate that the cartridge should be replaced.
- The contaminants or other substances removed or reduced by these systems are not necessarily in your water. Ask your local water municipality for a copy of their water analysis or have your private well tested by a reputable water testing lab.
- After prolonged periods of non-use (such as during a vacation), it is recommended that the system be flushed thoroughly. Let water run for 5-6 minutes before using. Repeat if necessary.

CONNECTING DIVERTER VALVE TO FAUCET



NOTE: Adapters are included which will fit most faucets. To create a tight seal, you may need to use the gasket from your faucet's aerator in addition to the washers included with the adapters. If the adapters do not fit, consult your local plumbing or hardware supplier for assistance in obtaining the correctly threaded adapter.

OPERATION

- A drinking water cartridge may contain carbon fines (very fine black powder). After installation, flush the cartridge 3-4 times per flush for 5-10 minutes to remove the fines before using the water. Repeat as required.
- It is recommended that you run the tap at least 20 seconds prior to each use for drinking or cooking purposes.
- During initial use, your water may appear cloudy. This cloudiness is caused by air that has been trapped in the cartridge. If the water sits for 5 minutes in a glass, you will notice the cloudiness disappear from the bottom up. This phenomenon is not harmful and will clear up in time as the remaining air is flushed from the cartridge.

OPERATING SPECIFICATIONS

Pressure Range:	30-60 psi (2.1-4.2 bar)
Temperature Range:	40-85°F (4.4-29.4°C)
Rated Service Flow:	0.3-0.5 gpm



TROUBLESHOOTING

A. Leaks between base and housing:

- Turn off faucet and unscrew base of housing.
- Check to make sure both O-rings are clean, lubricated with non-petroleum oil (do not use coconut oil) and undamaged. Replace if necessary.
- Use thread seal tape around sump threading.
- Reinsert cartridge into base according to the directional arrow on the cartridge which indicated "This End Towards Cap" and screw on sump using sump wrench. Be careful not to cross-thread or overtighten. If leak persists, contact Technical Support at service@crystalquest.com.

B. Diverter valve will not release:

- Unscrew diverter valve from faucet.
- Soak in white vinegar up to one hour to remove scale build-up and rinse.

C. Decreased flow or return of bad taste/odor:

- Replace filter cartridge.

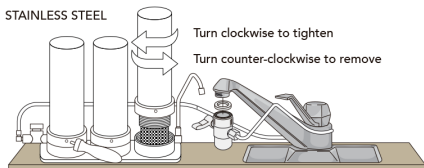
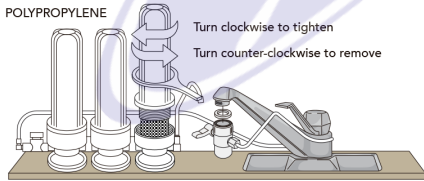
FILTER CARTRIDGE REPLACEMENT

- Turn off faucet. Unscrew the top of the housing using sump wrench (Fig 1). Water may spill when housing is removed. Empty excess water into sink. Set top of filter housing aside.
- Pull out filter cartridge to remove from the base. Clean top and base of filter housing with warm water, mild dish soap and a soft cloth. Do not use harsh detergents, abrasive cleaners or wire brushes, as they may damage the system.
- Set base of filter on counter. Insert new filter cartridge according to the directional arrow on the cartridge which indicates "This End Towards Cap". Seat securely into filter base (Fig 2).

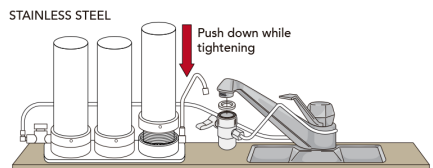
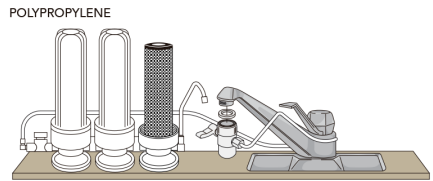
NOTE: Make sure both black O-rings are present on the filter housing. Also, make sure to lubricate O-rings with cooking oil. (Do not use coconut oil).

- Screw top of filter housing onto base and tighten with sump wrench until very snug.

- Turn on water and the diverter handle. Flush the cartridge 3-4 times for 5 to 10 minutes to remove any media fines before using water.



(Fig. 1)

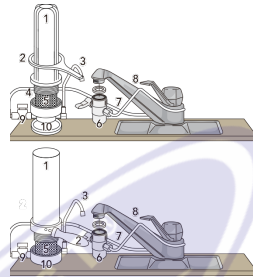


(Fig. 2)



REPLACEMENT PARTS

- CQE-RC-04000 2-7/8" x 9-3/4"
Coconut Based 5-Micron Carbon Block Filter Cartridge (12-18 months lifetime expectancy)
- CQE-RC-04001 2-7/8" x 9-3/4"
Pleated Cellulose Sediment Cartridge (12-18 months lifetime expectancy)
- CQE-RC-04002 2-7/8" x 9-3/4"
SMART PLUS Filter Cartridge (18-36 months lifetime expectancy)
- CQE-RC-04005 2-7/8" x 9-3/4"
Ceramic Water Filter Cartridge (2-3 years with proper cleaning)
- CQE-RC-04006 2-7/8" x 9-3/4"
Fluoride Removal Filter Cartridge (12-18 months lifetime expectancy)
- CQE-RC-04049 2-7/8" x 9-3/4"
Fluoride Removal + SMART Filter Cartridge (6-12 months lifetime expectancy)
- CQE-RC-04007 2-7/8" x 9-3/4"
Nitrate Removal Filter Cartridge (12-18 months lifetime expectancy)
- CQE-RC-04050 2-7/8" x 9-3/4"
Nitrate Removal + SMART Filter Cartridge (6-12 months lifetime expectancy)
- CQE-RC-04008 2-7/8" x 9-3/4"
Arsenic Removal Filter Cartridge (12-18 months lifetime expectancy)
- CQE-RC-04051 2-7/8" x 9-3/4"
Arsenic Removal + SMART Filter Cartridge (6-12 months lifetime expectancy)



- Filter Housing (1)
- Wrench (2)
- Spout (3)
- O-ring (4)
- Filter Cartridge (5)
- Diverter Valve (6)
- Tubing (7)
- Clamp (8)
- Optional Prefilter (9)
- Base (10)

ONE-YEAR LIMITED WARRANTY

CRYSTAL QUEST® warrants your CRYSTAL QUEST® Countertop Replaceable Water Filter System for one year from the date of purchase against all defects in materials and workmanship when used in compliance with the manual. This warranty does not include replacement cartridges unless defective upon receipt. CRYSTAL QUEST® disclaims all implied warranties including, without limitation, warranties of merchantability and fitness for a particular purpose. If for any reason the product proves to be defective within one year from the date of purchase, please call for assistance. This warranty gives you specific legal rights and you may have other legal rights which vary from state to state. CRYSTAL QUEST® assumes no responsibility for incidental or consequential damages, for damages arising out of misuse of the product, or the use of any unauthorized attachment. Some states do not allow the exclusion or limitation of implied warranties or incidental or consequential damages, so the above limitations or exclusions may not apply to you. Should service be required during or after the warranty period or should you have any questions regarding how to use your CRYSTAL QUEST® Countertop Replaceable Water Filter System, contact our Technical Support Department at service@crystalquest.com, Monday through Friday, 9 A.M. to 4:30 P.M. Eastern Time.

KEEP THIS MANUAL FOR FUTURE REFERENCE AND UNIT MAINTENANCE

Online warranty information
<http://crystalquest.com/warranty.htm>

Product design is subject to change without notice.

For further assistance, contact your Crystal Quest dealer
 or visit us at www.crystalquest.com

To view the latest edition of the Countertop Replaceable Water Filter System, visit CrystalQuest.com

Please note all drawings, pictures, colors and sizes are approximate for illustrative purposes only and may not exactly resemble the end product.



AUTHORIZED DISTRIBUTOR

Should service be required during or after the warranty period or should you have any questions regarding how to use your Commercial Water Purification System, please contact manufacturer's Technical Support Department Monday through Friday, 9 AM to 5 PM Eastern Time, or your authorized CRYSTAL QUEST dealer:



Mailing Address:
FilterWater.com
P.O. Box 968
Southampton, PA 18966
USA

<http://www.FilterWater.com>
Tel. +1 (800) 439-0263
Fax +1 (215) 354-0304
Email: Sales@filterwater.com