



# Crystal Quest® Classic Countertop Water Filter INSTALLATION AND OPERATION GUIDE



Copyright 2017  
Crystal Quest®  
All rights reserved  
MADE IN THE USA

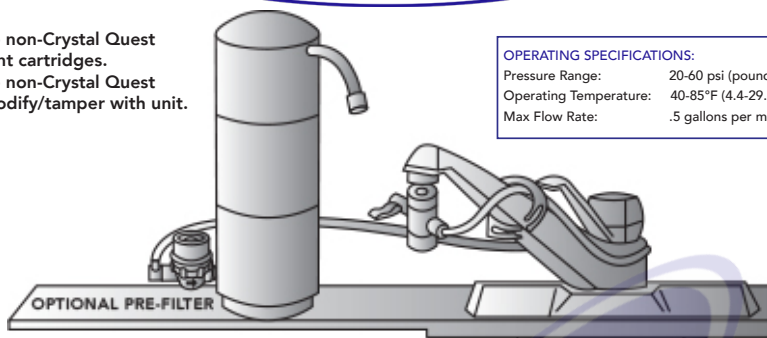




Do not use non-Crystal Quest replacement cartridges.  
Do not use non-Crystal Quest parts or modify/tamper with unit.

#### OPERATING SPECIFICATIONS:

Pressure Range: 20-60 psi (pounds per sq. in.)  
Operating Temperature: 40-85°F (4.4-29.4°C)  
Max Flow Rate: .5 gallons per minute



- Filter must be protected against freezing which can cause cracking of the filter and water leakage.
- Please read all instructions and precautions before installing and using your Crystal Quest® Countertop Water Filter.
- Filter life varies depending on filter type, usage, and water conditions.
- Do not install on hot water line.
- For cold water use only.
- The system has a limited service life. Changes in taste, odor, or reduced flow of the water being filtered indicate that the unit should be replaced.
- The contaminants or other substances removed or reduced by these systems are not necessarily in your water. Ask your local water municipality for a copy of their water analysis.
- After prolonged periods of non-use (such as during a vacation), it is recommended that the system be flushed thoroughly. Let water run for 5-6 minutes before using.

**WARNING:** Do not use with water that is microbiologically unsafe or of unknown quality without adequate disinfection before or after the system.

## CONNECTING DIVERTER TO FAUCET

1. Remove aerator from faucet on which filter will be installed (Fig 1).

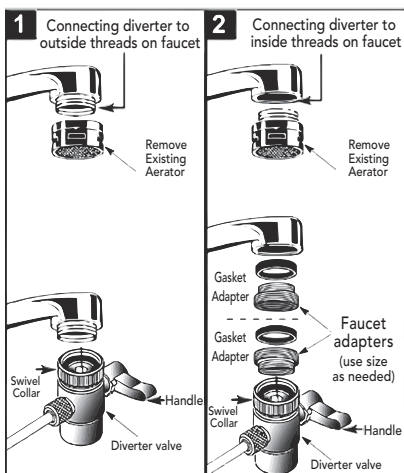
2. Determine the type of threads on your faucet: Outside threads : No adapters should be needed (Fig 1); proceed to Step 3. Inside threads: Select the correct adapter and washer (Fig 2) and screw into faucet. Tighten manually.

**NOTE: Adapters are included which will fit most faucets.**

To create a tight seal, you may need to use the gasket from your faucet's aerator in addition to the washers included with the adapters. If the adapters do not fit, consult your local plumbing or hardware supplier for assistance in obtaining the correctly threaded adapter.

3. Screw the diverter valve onto the faucet, turning swivel collar to tighten. Make certain that gasket (already installed in diverter valve) is positioned securely between the diverter valve and the faucet (or adapter). Rotate diverter valve stem to desired position. Swivel collar may need to be re-tightened. Place assembly conveniently next to sink.

4. Turn on water at faucet handle then turn on diverter handle. This causes the water to flow through the filter. To stop water flow to filter, turn off water at faucet handle, then turn off diverter handle.





## OPERATION

### WATER APPEARANCE

- **WHITE water.** When a new water filter is installed or after cleaning, the water may appear milky or white for a while. It is harmless and will soon clear. White water is due to micro bubbles of air. On standing, the water will become clear as the bubbles move upwards. Water in some areas of the country has a high level of lime or calcium. The Redox inside the unit changes these substances into harmless elements which react with air and temperature.
- **BLACK water.** When a new water filter is installed or after cleaning, very fine black particles may appear in the water. This is normal and the particles are harmless carbon. Flushing the system for a few minutes by turning the tap on and off rapidly several times will help to clear this.
- **COLORED water (often RED).** Water in some areas may be high in dissolved iron and this can pass through the filter. When the water is left to stand, dissolved iron gives a red or brown color as the iron oxidizes (rusts). In very severe cases you should contact Crystal Quest® for specialist advice. Ordinary particulate rust in the water will be removed by the system.

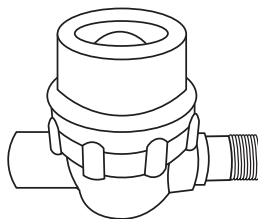
### WATER APPEARANCE

Filtered and treated water tastes so much better than unfiltered water. But there are also some who cannot detect any change. Others find that the treated water tastes "different", but they will soon become accustomed to the taste of the filtered water. A major factor affecting taste may be the natural composition in a particular area. There can be considerable local differences in the mineral content of the water, for example.

- **Fish odor or sour taste water.** System is not flushed properly. Run the water for five minutes and shut off for five minutes. Do three to four times consecutively. Some areas might have hard water. In very severe cases you should contact Crystal Quest® to speak to one of our water specialists at 1-800-934-0051.
- **Chlorine taste.** The 'natural' taste of an area's water is often masked by the presence of chlorine used in the treatment process. If the chlorine taste consistently reappears, the unit should be replaced. If after prolonged standing or during infrequent use any strong objectionable taste occurs, flush the system by running water for 5 minutes.
- **Bad taste and/or odor.** The unit needs replacing.

### SPF WASHABLE PRE-FILTRATION FILTER (SOLD SEPARATELY)

Small pre-filters designed to remove sediment and any other particulate greater than 4 microns in size before the water is fed through to the main countertop filter. The purpose is to reduce the burden on the main filter unit and increase its effectiveness and lifespan. The pre-filter consists of a stainless-steel screen filter which is sealed inside a small, clear, removable housing with an O-ring. Maintenance and installation are simple. The clear housing makes it easy to see when the filter needs to be washed and the filter can be installed directly into a 1/4" NPT threaded receptacle. To wash, simply unscrew the clear housing, wash the screen, and screw the housing back on. If maintained properly the pre-filter should last indefinitely. If you didn't purchase a pre-filter with your original order, please visit [CrystalQuest.com](http://CrystalQuest.com) or call 1-800-934-0051 to purchase.





## ONE-YEAR LIMITED WARRANTY

CRYSTAL QUEST® warrants your CRYSTAL QUEST® Countertop Water Filter System for one year from the date of purchase against all defects in materials and workmanship when used in compliance with the manual. CRYSTAL QUEST® disclaims all implied warranties including, without limitation, warranties of merchantability and fitness for a particular purpose. If for any reason the product proves to be defective within one year from the date of purchase, please call for assistance. This warranty gives you specific legal rights and you may have other legal rights which vary from state to state. CRYSTAL QUEST® assumes no responsibility for incidental or consequential damages; for damages arising out of misuse of the product or the use of any unauthorized attachment. Some states do not allow the exclusion or limitation of implied warranties or incidental or consequential damages, so the above limitations or exclusions may not apply to you. Should service be required during or after the warranty period or should you have any questions regarding how to use your CRYSTAL QUEST® Countertop Water Filter System, contact our Technical Support Department at [service@crystalquest.com](mailto:service@crystalquest.com), Monday through Friday, 9 AM to 5 PM Eastern Time.

## KEEP THIS MANUAL FOR FUTURE REFERENCE AND UNIT MAINTENANCE

Online warranty information  
<http://crystalquest.com/warranty.htm>

Product design is subject to change without notice.

For further assistance, contact your Crystal Quest dealer  
or visit us at [www.crystalquest.com](http://www.crystalquest.com)

To view the latest edition of the Classic Countertop Water Filter Guide visit [CrystalQuest.com](http://CrystalQuest.com)

*Please note all drawings, pictures, colors and sizes are approximate for illustrative purposes  
only and may not exactly resemble the end product.*



## AUTHORIZED DISTRIBUTOR

Should service be required during or after the warranty period or should you have any questions regarding how to use your devices, please contact manufacturer's Technical Support Department Monday through Friday, 9 AM to 5 PM Eastern Time, or your authorized CRYSTAL QUEST dealer:



Mailing Address:  
**FilterWater.com**  
P.O. Box 968  
Southampton, PA 18966  
USA

<http://www.FilterWater.com>  
Tel. +1 (800) 439-0263  
Fax +1 (215) 354-0304  
Email: [Sales@filterwater.com](mailto:Sales@filterwater.com)