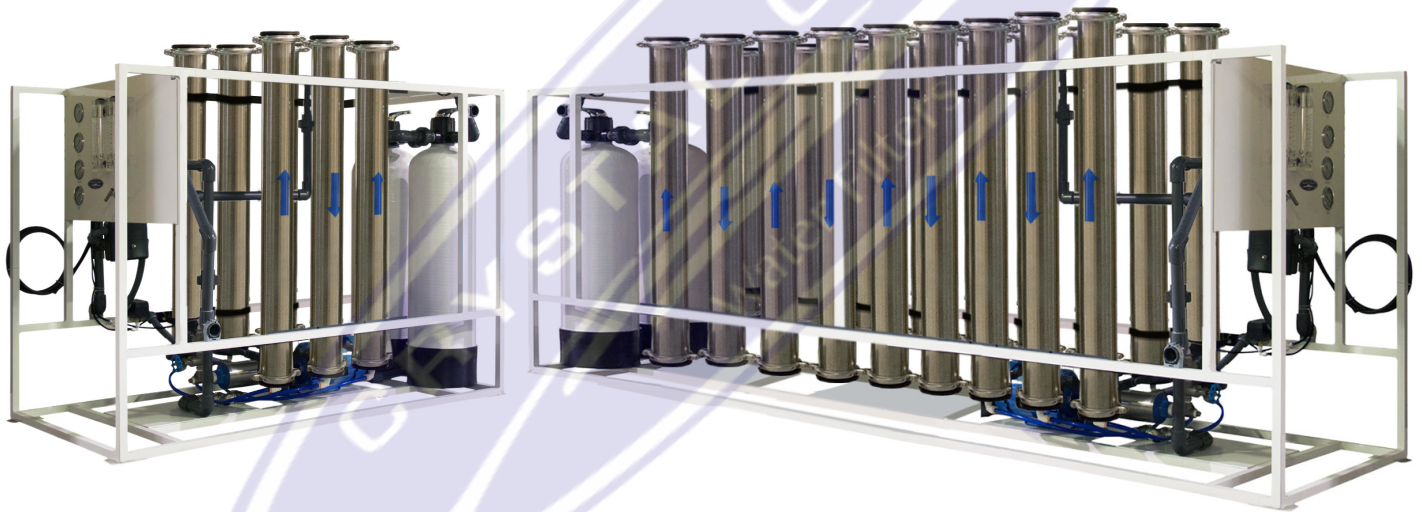




# Crystal Quest® Thunder Reverse Osmosis INSTALLATION AND OPERATION GUIDE

MODELS  
10,000, 15,000, 20,000,  
30,000 & 40,000



Copyright 2018  
Crystal Quest®  
All rights reserved  
MADE IN THE USA





## INTRODUCTION

Your Thunder commercial reverse osmosis system is a durable piece of equipment which, with proper care, will last for many years. This User's Manual outlines installation, operating, maintenance, and troubleshooting details vital to the sustained performance of your system.

The test results which are included with this User's Manual indicates your system's permeate (product) and rejection test results.

If your system is altered at the site of operation or if the feed water conditions change, please contact your local dealer or distributor to determine the proper recovery for your application. **NOTE:** In order to maintain warranty, an operating log must be maintained. Copies must be sent to your local dealer or distributor for review.

**NOTE:** Prior to operating or servicing the Thunder commercial reverse osmosis system, this User's Manual must be read and fully understood. Keep it and other associated information for future reference and for new operators or qualified personnel near the system.

## SAFETY

The Safety section of this User's Manual outlines the various safety headings used throughout this manual's text and are enhanced and defined below:

**NOTE:** Indicates statements that provide further information and clarification.

**CAUTION:** Indicates statements that are used to identify conditions or practices that could result in equipment or other property damage.

**WARNING:** Indicates statements that are used to identify conditions or practices that could result in injury or loss of life. **FAILURE TO FOLLOW WARNINGS COULD RESULT IN SERIOUS INJURY OR EVEN DEATH.**

## LABELING

Do not under any circumstance; remove any Caution, Warning, or other descriptive labels from the system.

## SYSTEM SPECIFICATIONS

Model	Thunder 10,000	Thunder 15,000	Thunder 20,000	Thunder 30,000	Thunder 40,000
Gallons Per Day	10000	15000	20000	20000	20000
Dimensions (approx.)	49" x 33" x 54"	63" x 39" x 54"	63" x 39" x 54"	41" x 143" x 80"	41" x 143" x 80"
Weight (approx.)	385 lbs.	400 lbs.	415 lbs.	N/A	N/A
Element Size (in.)	4040 TFC HF-1	4040 TFC HF-1	4040 TFC HF-1	4040 TFC HF-1	4040 TFC HF-1
Elements (qty.)	6	8	10	14	18
Motor HP	1.5	1.5	1.5	3	3
Voltage	110/220	110/220	110/220	110/220	110/220
Hertz	50/60	50/60	50/60	50/60	50/60
Feed Connection	2"	2"	2"	2"	1.5"
Product Connection	1"	1"	1"	1"	1"
Waste Connection	1"	1"	1"	1"	1"
Minimum Feed (gpm)	14	21	30	30	30
Maximum Feed (gpm)	30	30	50	50	50
Recovery*	33%-50%	33%-50%	33%-50%	33%-50%	33%-50%

\* Recovery ratio may vary between 33% - 50% and up to 75% if system projections have been provided.



## FEED WATER & OPERATION SPECIFICATIONS

Nothing has a greater effect on a reverse osmosis system than the feed water quality.

**NOTE:** It is very important to meet the minimum feed water requirements. Failure to do so will cause the membranes to foul and void the warranty.

Feed Water Specifications			
Free Chlorine	<1 ppm	Manganese	<0.05 ppm
Total Dissolved Solids	<2000 ppm	Organics	<1 ppm
Turbidity (SDI)	<5	Temperature	40°F-105°F
pH	3-11	Silica	<1 ppm
Hardness	<15gpg	Iron	<2 ppm in Concentrate

The manufacturer has provided you with the suggested operation specifications. These specifications should be met in order to have the reverse osmosis system perform optimally. All operation specifications are based on the test conditions listed below.

Operating Specifications			
Minimum Feed Pressure	35 psi	Minimum NaCl Rejection	96%
Nominal % Rejection	98.5%	Maximum Hardness	15gpg
Maximum TDS	2000 ppm	Operating Pressure	150 psi
pH Range	3-11	Maximum Temperature	105°F

**Test Conditions:** Permeate flow and salt rejection based on 550 ppm, 150 psi, 77°F (25°C), pH 7, and 50% recovery as indicated.

**NOTE:** Higher TDS and/or lower temperatures will reduce the system's production.

## REJECTION, RECOVERY, & FLOW RATES

Thunder reverse osmosis systems are designed to produce purified water at the capacities indicated by the suffix in the system's name under the conditions listed above. For example, the Thunder 10000 produces 10000 gallons per day of purified water @ 77°F.

The amount of total dissolved solids (TDS) rejected by the membrane is expressed as a percentage. For example, a 99% rejection rate means that 99% of total dissolved solids do not pass through the membrane. To calculate the % rejection, use the following formula:

$$\% \text{ Rejection} = \frac{(\text{Feed TDS} - \text{Product TDS})}{\text{Feed TDS}} \times 100$$

**NOTE:** All TDS figures must be expressed in the same units, usually parts per million (ppm) or milligrams per liter (mg/l).

Thunder commercial reverse osmosis systems are designed to reject up to 98.5% NaCl, unless computer projections have been provided and state a different rejection percentage.

The amount of purified water recovered for use is expressed as a percentage. To calculate % recovery, use the following formula:

$$\% \text{ Recovery} = \frac{(\text{Product Water Flow Rate})}{(\text{Feed Water Flow Rate})} \times 100$$

**NOTE:** All flow rates must be expressed in the same units, usually gallons per minute (gpm).



## SYSTEM REQUIREMENTS & OPERATION GUIDELINES

### Plumbing

The membranes and high pressure pumps used on Thunder systems require a continuous flow of water with a minimum feed pressure of 35 psi, which does not exceed 105°F.

The piping for the feed line is a 1" Solenoid Valve This is connected to the filter housing.

The piping used for the concentrate line is 1" FNPT and should be run to an open drain in a free and unrestricted manner (no back pressure).

The piping used for the permeate line is 1" FNPT and can be run to the holding tank or directly to the point-of-use application with PVC pipe, or another FDA approved material This is so the material being used does not dissolve into the permeate water. Be certain that all of the components of the feed water are soluble at the concentrations attained in the system. A system operating at 50% recovery, concentrates all impurities by two times the amount.

**CAUTION:** Any restrictions or blockage in the drain line can cause back pressure, which will increase the system's operating pressure. This can result in damage to the system's membranes and components.

### Electrical

The motors used on Thunder 10000, 15000, & 20000 systems are pump and motor combinations. The 10000, 15000 and 20000 are available in 1.5 phase 220 volt at 60 hertz or 220 volt at 50 hertz at an additional charge. The Thunder 30000 and 40000 is available in 3 phase 220 volt at 60 hertz.

Please ensure that the electrical circuit supplying the system is compatible with the requirements of the specific Thunder model you are installing.

**NOTE:** We recommend that a licensed electrician wire your system in accordance with local and national electrical codes (NEC).

**WARNING:** To reduce the risk of electrical shock, the incoming power supply must include a protective earth ground.

Each Thunder system is equipped with a 5 foot electrical cord.

### Pre-Filtration

These Thunder systems are supplied with a 10 Micron FSI Bag Filter which filters sediment to a level of 10 microns. The 4.5" x 20" 5 Micron stainless steel filter removes particles over 5 microns. Change the cartridge at least every month or whenever needed. A chlorine removal system must be installed before the system. Ask your local dealer or distributor about Water Softeners and/or Filtration systems.

**NOTE:** The system must be operated on filtered water only. Do not attempt to clean used filter cartridges.

**NOTE:** Some permeate will be produced during the auto flush; therefore, an overflow for the permeate storage tank is recommended.



## PUMP

The pumps used on Thunder Series systems are pump and motor combinations. They are multi-stage centrifugal pumps. Follow these guidelines to ensure proper operation of the pump:

- The pump must NEVER be run dry. Operating the pump without sufficient feed water will damage the pump.
- ALWAYS feed the pump with filtered water. The pump is susceptible to damage from sediment and debris.
- If any damage occurs to your system's pump a re-build kit may be available. Contact your local dealer or distributor and inform them of your system's model and pump size.

## MOUNTING

The free standing system should be bolted down in compliance with local regulation standards or securely fastened.

### Membrane Elements

Thunder reverse osmosis systems come pre-loaded with Thin Film Composite (TFC) High Flow Low Energy membranes, unless otherwise specified. General membrane element performance characteristics are listed below:

Membrane Element Characteristics			
Operating Pressure	150 psi	Maximum Pressure	400 psi
Nominal % Rejection	98.5%	Chlorine Tolerance	<1 ppm
Maximum Temperature	110°F	Turbidity	1 NTU
Silt Density Index	<5 SDI	pH Range	3-11

**Test Conditions:** Permeate flow and salt rejection based on 550 ppm, 150 psi, 77°F (25°C), pH 7, and 15% recovery. **NOTE:** Higher TDS and/or lower temperatures will reduce the membrane's production.





## INSTALLATION

Thunder reverse osmosis systems must be securely mounted and placed on an even floor, so that the system will not vibrate or move. If this occurs, place the system on a rubber mat to reduce the vibrations and movement.

Carefully inspect your system before start-up. Check that all plumbing and electrical connections are not loose or have not come undone during shipment. A User's Manual, Test Results, and Filter Housing Wrench will accompany your Thunder reverse osmosis system

### System Purging

NOTE: Leave the power to the system off for this procedure.

1. Redirect permeate water to the drain for this procedure.
2. Fully open the concentrate valve (Counter Clockwise).
3. Fully close the recycle valve (Clockwise) (If Applicable).
4. Fully close the bypass valve mounted on the RO pump.
5. Offset the position of the bypass white lever on the solenoid valve.
6. Turn the feed water on and let the system purge until no visible bubbles appear from concentrate flow meter.

### Initial Start-Up (After Purging)

1. Fully open concentrate valve (Counter Clockwise)
2. Fully close recycle valve (Clockwise)(If Applicable)
3. Fully open bypass valve mounted on RO pump.
4. Return position of bypass white lever on the solenoid valve.
5. Turn RO system on and adjust bypass valve, concentrate (waste) valve #8 and recycle valve (If Applicable) to designed flow and pressure.
6. Inspect for leaks and after one hour shut down system. Re-direct permeate back to tank or POU and then turn system back on.
7. Record readings daily for a week and after a week record readings once a week.



## INSTALLATION *CONTINUED*

### Start-Up

1. Locate the 2" FNPT Solenoid Valve feed water inlet next to the filter housing.
2. Attach the inlet piping to the 2" FNPT Solenoid Valve feed water inlet. Always maintain a smooth and sufficient flow of feed water during operation.
3. Locate the 1" FNPT permeate outlet.
4. Attach the permeate piping to the permeate outlet. Make sure that the permeate water can flow freely and that there is no back pressure. Back pressure can cause damage to the membrane elements.

**CAUTION:** The plumbing in the permeate line can contaminate the high quality water produced by the system; ensure that the components are compatible with the application. The pH of the reverse osmosis permeate water will normally be 1-2 points lower than the feed water pH. A low pH can be very aggressive to some plumbing materials such as copper piping.

5. Locate the concentrate outlet on the drain side of the concentrate control valve.
6. Attach the drain line to the concentrate outlet. Water must be allowed to run freely, without any restrictions or blockage in the drain line. Make sure that no back pressure exists on the concentrate line.
7. Ensure that the electrical power requirements of the Thunder system match your electrical power supply.
8. Thunder systems are typically controlled with a liquid level switch in a storage tank. The liquid level switch turns the system on when the water level in the tank drops, and off when the tank is full. If your reverse osmosis system is equipped with an electrical control box, the level control is connected to the level control connections in the control box. The level control connections are dry contacts and never apply power to these connections. Liquid level switches can be obtained by your local dealer or distributor. If a liquid level switch is to be used, install it at this time.
9. Disconnect the permeate line to the storage tank or point-of-use application and direct it to the drain. Flush the system for approximately 15 minutes with the feed water by fully opening the concentrate valve counter-clockwise. This will assist in removing any impurities or preservative within the system. At this time check for any wetted parts which may have been damaged during shipment. After 15 minutes shut down the feed water.
10. Turn on the power to the system.
11. Follow any specified system projections supplied.
12. Make sure that no back pressure exists on the permeate line.
13. Locate the concentrate control valve and the concentrate pressure gauge.
14. Turn the concentrate control valve until the designated recovery is acquired. The concentrate pressure will increase as the concentrate control valve is closed. The exact operating pressure may vary depending on the temperature and TDS of your feed water. It may be necessary to re adjust the system if there is a major change in feed water temperature and/or TDS.
15. Turn the pump bypass valve until the correct pump pressure is achieved. For example a Thunder 10000 should be adjusted until it produces about 10000 GPD or 6.94 GPM of permeate or product water.

$$\text{GPM} = \text{GPD}/1440$$

**WARNING:** Never exceed the maximum pressure rating of your pressure vessels.



## OPERATION & MAINTENANCE

The reverse osmosis process causes the concentration of impurities. The impurities may precipitate (come out of solution) when their concentration reaches saturation levels. **NOTE:** Precipitation can scale or foul membranes and must be prevented.

Check your feed water chemistry and pre-treat the water and/or reduce the system's recovery as required. If necessary, consult with your local dealer or distributor.

### Pre-Filter Pressure Gauges

These gauges measure the feed water pressure when it enters and exits the pre-filter housings. A pressure differential of 10 -15 psi or more on the two pressure gauges indicates that the pre-filters require servicing. For example, if the inlet pressure is 40 psi, the filter should be changed when the outlet pressure is 30 psi or below.

### Product (Permeate) Flow Meter & Waste (Concentrate) Flow Meter

These flow meters indicate the flow rates of permeate and concentrate water. The measurements, when added together, also indicate the feed water flow rate; if the system is not equipped with a waste recycle.

### Waste (Concentrate) Recycle Valve

This valve allows you to recycle some of the concentrate water back into the feed of the pump. This will increase the recovery of the Thunder system. An optional waste recycle flow meter allows you to measure how much concentrate is recycled. The amount of waste water recycled is limited by the TDS of the feed water. The drawback of using a concentrate recycle is that there will be an increase of total dissolved solids in the permeate water.

**CAUTION:** Excessive recycling may cause premature fouling or scaling of the membrane elements.

### Low Pressure Switch

The low pressure switch shuts off the system and sounds an alarm when the feed water pressure drops too low for the system to function properly. This prevents damage to the pump. The system restarts automatically when the pressure is restored. If you notice the pressure fluctuating, and the system cycling off and on, turn the system off and ensure that proper feed flow and pressure are available to the system. For further information, please review the computer controller's manual.

### Low Pressure Shut-Off Switch

The low pressure protection circuit can be located on the back panel of your Thunder system. The low pressure shut-off switch monitors the system's feed water pressure and will shut off the system and sound alarm if pressure loss is detected.

### Auto Flush

The auto flush option bypasses the concentrate control valve, reducing the concentrate pressure and increasing the flow of feed water across the membrane. The auto flush removes foulants that may have attached to the surface of the membrane. By removing these foulants before they crystallize on the surface of the membrane, the system can operate longer without cleaning and/or replacing the membrane elements. The following are instances in which the auto-flush should be utilized:

1. When injecting antiscalant chemicals. These chemicals keep scaling ions in solution up to a higher concentration so the ions don't precipitate, and scale the membrane elements. If the solubility concentration is exceeded, the ions may precipitate and scale the membrane.





## OPERATION & MAINTENANCE *CONTINUED*

2. For feed water with a high scaling potential (hard water) in addition to the auto-flush, pre-treat the water with an antiscalant or a water softener. Do not use the automatic fast flush instead of pretreatment.
3. Where minimal maintenance is important, auto-flush can increase the time between membrane cleanings.
4. For high TDS applications where the TDS exceeds 500 ppm, consider upgrading system to auto-flush.
5. For higher recovery applications (that use a recycle valve), consider using auto-flush.
6. For systems that may remain inoperative for long periods of time, auto-flush should be installed. The auto-flush will not operate if the electrical power is removed from the system.

The auto flush feature includes an adjustable setting that regulates its operation. In the auto flush mode the water will flush across the membrane in the same direction as the water flows in normal operation; this is not a backwash flow.

## PUMP BYPASS VALVE

This valve is installed as a standard feature on the Thunder Series reverse osmosis systems. It provides an adjustment for pump pressure, which will vary as the required system pressure changes. Note that with a multi-stage pump, the pump flow decreases as the operating pressure increases.

As the feed water temperature decreases, and/or the feed water TDS increases, the system will require a higher operating pressure to produce the specified permeate flow. A Thunder system installed in Florida may provide the specified permeate flow of 3.47 gpm at 150 psi; however the same system installed in Maine - much colder feed water - may require 190 psi to produce the same amount of permeate. The system in Florida would have a higher concentrate flow to the drain because of the lower operating pressure, which would result in poor system recovery.

$$\% \text{ Rejection} = (\text{Feed TDS} - \text{Product TDS}) / (\text{Feed TDS}) \times 100$$

## MEMBRANE REMOVAL & REPLACEMENT

Changing membranes in pressure vessels is an easy process if you have the proper information and tools at hand. Please refer to the following instructions when removing and replacing membrane elements:

1. Remove the end caps from the top of the membrane housings. This is done by removing the white Nylon snap ring of the Champ housing or unscrewing the bolts of the housing, which holds on the clamp.
2. Remove the membrane bag containing the membrane element from the shipping box.
3. Cut the bag open as close as possible to the seal at the end of the bag, so the bag may be re used if necessary.
4. Remove the membrane element from the bag and remove the black core tube protectors from each end of the membrane.
5. Remove parts from the parts container (if included) and inspect. Make sure that all parts are clean and free from dirt. Examine the brine seal, and permeate tube for nicks or cuts. Replace the O-rings or brine seal if damaged.
6. Flow directions should be observed for installation of each element in each housing.



## MEMBRANE REMOVAL & REPLACEMENT *CONTINUED*

As time progresses, the efficiency of the membrane will be reduced. In general, the salt rejection does not change significantly until two or three years after installation when operated on properly pretreated feed water. The permeate flow rate will begin to decline slightly after one year of operation, but can be extended with diligent flushing and cleaning of the system. A high pH and/or precipitation of hardness can cause premature loss in rejection of membrane elements in the system.

To replace the membrane elements:

1. Remove all of the membrane element(s) from the membrane element housings from the top of the housing. Heavy-duty pliers and channel lock pliers may be necessary to pull the old membrane element out of the membrane element housing.
2. Install the brine seal side of the membrane elements first. When the housings have a direction of flow from bottom to top, the brine seal should be located on the end of the membrane element at the bottom of the housing.
3. Lubricate the brine seal with a food grade lubricant.
4. At a slight angle insert membrane while slightly rotating element being careful not to tear or flip the brine seal. Re-lube the brine seal if necessary.
5. With a smooth and constant motion, push the membrane element into the housing so that the brine seal enters the housing without coming out of the brine seal groove. A slow twisting motion should be used to insert the membrane element, to ensure that the brine seal stays in place.
6. Re-install the end caps by gently twisting the end cap while pushing it onto the housing. Ensure that you do not pinch or fatigue any O-rings while pushing the end plug on. Push the end plug on until the outer diameter of the plug is flush with the outer diameter of the membrane housing.
7. Insert nylon snap ring until fully seated. Snap ring must be able to be spun in place if fully seated. If you are using a stainless steel housing, install the clamps halves, and tighten bolts until the clamp halves meet.
8. Reconnect any fittings that may have been disconnected when the membrane element housings were disassembled.
9. To Start-Up the system, refer to Start-Up.

**CAUTION:** New or factory cleaned membranes are shipped in a preservative solution. New or cleaned membranes must be flushed for at least 1 hour to remove the preservative from the membrane. Discard all of the permeate and concentrate, which is produced during the flush.



## MEMBRANE CLEANING

Periodic cleaning of the membrane(s) can improve system performance. In normal operation, mineral scale, biological matter, colloidal particles, and organic substances can foul the membranes.

**WARNING:** Cleaning chemicals are dangerous and can cause injury and damage to the environment. Read and comply with all safety and disposal precautions listed on the Safety Data Sheets (SDS's). It is the user's responsibility to comply with all applicable federal, state, and local regulations.

### Organic Foulant Cleaning

The following cleaning procedures are designed specifically for membranes that have been fouled with organic matter. Review the general cleaning instructions for information that is common to all types of cleaning such as suggested equipment, pH and temperature limits, and recommended flow rates.

### Safety Precautions

1. When using any chemical indicated here in subsequent sections, follow accepted safety practices. Consult the chemical manufacturer for detailed information about safety, handling and disposal.
2. When preparing cleaning solutions, ensure that all chemicals are dissolved and well mixed before circulating the solutions through the membrane elements.
3. It is recommended the membrane elements be flushed with good-quality chlorine-free water after cleaning. Permeate water is recommended; but a de-chlorinated potable supply or pre-filtered feed water may be used, provided that there are no corrosion problems in the piping system. Operate initially at reduced flow and pressure, to flush the bulk of the cleaning solution from the elements before resuming normal operating pressures and flows. Despite this precaution, cleaning chemicals will be present on the permeate side following cleaning. Therefore, permeate must be diverted to drain for at least 10 minutes or until the water is clear when starting up after cleaning.
4. During recirculation of cleaning solutions, the temperatures must not exceed 50°C at pH 2-10, 35°C at pH 1 -11, and 30°C at pH 1 -12.
5. For membrane elements greater than six inches in diameter, the flow direction during cleaning must be the same as during normal operation to prevent element telescoping, because the housing thrust ring is installed only on the reject end of the housing. This is also recommended for smaller elements.

### Cleaning Procedures

There are seven steps in cleaning membrane elements with organics.

1. Make up the cleaning solution listed from Table 1.

Table 1: Organic Cleaning Solution
Preferred 0.1% (wt) Soda Ash
pH 12, 30°C maximum
Preferred 0.1% (wt) NaOH 0.025% (wt)
pH 12, 30°C maximum

#### Notes:

(wt) Denotes weight percent of active ingredient.

Cleaning chemical symbols in order used: NaOH is sodium hydroxide.



## MEMBRANE CLEANING *CLEANING PROCEDURES*

### Cleaning the Organics from Membrane Elements

2. Low-flow pumping. Pump mixed, preheated cleaning solution to the vessel at conditions of low flow rate (about half of that shown in Table 2) and low pressure to displace the process water. Use only enough pressure to compensate for the pressure drop from feed to concentrate. The pressure should be low enough that essentially no permeate is produced. A low pressure minimizes re-deposition of dirt on the membrane. Dump the concentrate, as necessary, to prevent dilution of the cleaning solution.
3. Re-circulate. After the process water is displaced, cleaning solution will be present in the concentrate stream that can be recycled to the cleaning solution tank. Recycle the cleaning solution for 15 minutes or until there is no visible color change. If a color change occurs, dispose of the cleaning solution and prepare a new solution as described in step 2.

**Table 2: Recommended Feed Flow Rate Per Housing During High Flow Rate Re-Circulation**

Dependent on number of elements in pressure vessel
4-Inch full-fit elements should be cleaned at 12-14 gpm (2.7-3.2 m <sup>3</sup> /hr)

4. Soak. Turn the pump off and allow the elements to soak. Soak the elements for 1 -15 hours (soaking overnight will give best results). To maintain temperature during an extended soak period, use a slow recirculation rate (about 10 percent of that shown in Table 2). Soak time will vary depending on the severity of the fouling. For lightly fouled systems, a soak time of 1-2 hours is sufficient.
5. High-flow pumping. Feed the cleaning solution at the rates shown in Table 2 for 45 minutes. The high flow rate flushes out the foulants removed from the membrane surface by the cleaning. If the elements are heavily fouled, using a flow rate that is 50 percent higher than shown in Table 2 may aid cleaning. At higher flow rates, excessive pressure drop may be a problem. The maximum recommended pressure drops are 15 psi per element or 50 psi per multi-element vessel, whichever value is more limiting.
6. Flush out. Pre-filtered raw water can be used for flushing out the cleaning solution, unless there will be corrosion problems (e.g., stagnant seawater will corrode stainless steel piping). To prevent precipitation, the minimum flush out temperature is 20°C. The system should be flushed for 1 hour.
7. The system should be restarted. Elements and the system need to stabilize before taking any data. The stabilization period will vary depending on the severity of the fouling. To regain optimum performance, it may take several cleaning and soak cycles.

**NOTE:** Recommendations made here are specifically designed for the membrane elements inserted in the Tunder reverse osmosis and nanofiltration elements. These recommendations, such as cleaning procedures and chemicals employed, may not be compatible with other brands of membrane elements. It is your responsibility to ensure the suitability of these recommendations and procedures if they are applied to membrane elements other than those which come with your system.

**NOTE:** No freedom from any patent owned by Seller or others is to be inferred. Because use conditions and applicable laws may differ from one location to another and may change with time, Customer is responsible for determining whether products and the information in this document are appropriate for Customer's use and for ensuring that Customer's workplace and disposal practices are in compliance with applicable laws and other governmental enactments. Seller assumes no obligation or liability for the information in this document. **NO WARRANTIES ARE GIVEN; ALL IMPLIED WARRANTIES OF MERCHANTABILITY OR FITNESS FOR A PARTICULAR PURPOSE ARE EXPRESSLY EXCLUDED.**



## MEMBRANE CLEANING *CONTINUED*

### Additional Information

By experience, the cleaning solution of Na<sub>4</sub>EDTA with caustic has been found to be slightly less effective than a standard caustic solution or a solution of caustic and Na-DSS. For any solution, contact time is critical. Several overnight soaks may be necessary to restore the system performance. After the elements are clean it is very beneficial to clean one additional time in order to clean off the last remaining biofilm layer on the surface of the membrane. Any remaining biofilm will tend to attract and trap dirt, so an extra cleaning will increase the time between cleanings. For industrial systems where the permeate or product water is not used for drinking, a non-oxidizing biocide can be used prior to step 1 of the cleaning procedure to kill any bacteria or biofilm in the system. Please refer to separate instructions on methods for sanitizing membrane systems (i.e., "Sanitization with DBNPA - Tech Facts"). If the only choice for a sanitizing agent is an oxidant, such as hydrogen peroxide, the system must be cleaned before sanitization.

## INORGANIC FOULANT CLEANING

The following cleaning procedures are designed specifically for membranes that have been fouled with organic matter. Review the general cleaning instructions for information that is common to all types of cleaning such as suggested equipment, pH and temperature limits, and recommended flow rates.

### Safety Precautions

1. When using any chemical indicated here in subsequent sections, follow accepted safety practices. Consult the chemical manufacturer for detailed information about safety, handling and disposal.
2. When preparing cleaning solutions, ensure that all chemicals are dissolved and well mixed before circulating the solutions through the membrane elements.
3. It is recommended the membrane elements be flushed with good-quality chlorine-free water after cleaning. Permeate water is recommended; but a de-chlorinated potable supply or pre-filtered feed water may be used, provided that there are no corrosion problems in the piping system. Operate initially at reduced flow and pressure, to flush the bulk of the cleaning solution from the elements before resuming normal operating pressures and flows. Despite this precaution, cleaning chemicals will be present on the permeate side following cleaning. Therefore, permeate must be diverted to drain for at least 10 minutes or until the water is clear when starting up after cleaning.
4. During recirculation of cleaning solutions, the temperatures must not exceed 50°C at pH 2-10, 35°C at pH 1-11, and 30°C at pH 1-12.
5. For membrane elements greater than six inches in diameter, the flow direction during cleaning must be the same as during normal operation to prevent element telescoping, because the housing thrust ring is installed only on the reject end of the housing. This is also recommended for smaller elements.





## INORGANIC FOULANT CLEANING *CLEANING PROCEDURES*

There are seven steps in cleaning membrane elements with Inorganics.

1. Make up the cleaning solution listed from Table 1.

Table 1: Inorganic Cleaning Solution
Preferred 2.0% (wt) Citric Acid
pH 2, 45°C maximum
Alternate: Muriatic Acid

**Notes:**

(wt) denotes weight percent of active ingredient.

Cleaning chemical symbols in order used: HCl is hydrochloric acid (Muriatic Acid).

Cleaning the Inorganics from Membrane Elements
Alternative 1.0%
Alternative 0.5% HsPCU

**Notes:**

(wt) denotes weight percent of active ingredient.

Cleaning chemical symbols in order used: HCl is hydrochloric acid (Muriatic Acid).

2. Low-flow pumping. Pump mixed, preheated cleaning solution to the vessel at conditions of low flow rate (about half of that shown in Table 2) and low pressure to displace the process water. Use only enough pressure to compensate for the pressure drop from feed to concentrate. The pressure should be low enough that essentially no permeate is produced (approx. 60 psi). A low pressure minimizes redeposition of dirt on the membrane. Dump the concentrate, as necessary, to prevent dilution of the cleaning solution.

Table 2: Recommended Feed Flow Rate Per Housing During High Flow Rate Re-Circulation		
2.5 Inches	20 - 60	3 - 5
4 Inches	20 - 60	8-10

**Notes:**

- Dependent on number of elements in pressure vessel.
- 4-Inch full-fit elements should be cleaned at 12-14 gpm (2.7-3.2 m<sup>3</sup>/hr).

3. Re-circulate. After the process water is displaced, cleaning solution will be present in the concentrate stream that can be recycled to the cleaning solution tank. Recycle the cleaning solution for 10 minutes or until there is no visible color change. If at anytime during the circulation process there is a change in pH or a color change, dispose of the solution and prepare a new solution as described in step 2. A pH of 2 must be maintained for the cleaning to be effective.

4. Soak. Turn the pump off and allow the elements to soak. Soak the elements for 1-15 hours (soaking overnight will give best results). To maintain temperature during an extended soak period, use a slow recirculation rate (about 10 percent of that shown in Table 2). Soak time will vary depending on the severity of the scaling. For lightly scaled systems, a soak time of 1-2 hours is sufficient.

5. High-flow pumping. Feed the cleaning solution at the rates shown in Table 2 for 10 minutes. The high flow rate flushes out the foulants removed from the membrane surface by the cleaning. If the elements are heavily fouled, using a flow rate that is 50 percent higher than shown in Table 2 may aid cleaning. At higher flow rates, excessive pressure drop may be a problem. The maximum recommended pressure drops are 15 psi per element or 50 psi per multi-element vessel, whichever value is more limiting.

6. Flush out. Pre-filtered raw water can be used for flushing out the cleaning solution, unless there will be corrosion problems (e.g., stagnant seawater will corrode stainless steel piping). To prevent precipitation, the minimum flush out temperature is 20°C. The system should be flushed for one hour.

7. The system should be restarted. Elements and the system need to stabilize before taking any data. The stabilization period will vary depending on the severity of the fouling. To regain optimum performance, it may take several cleaning and soak cycles.



## FLUSHING THE SYSTEM

The system should be flushed weekly to remove sediment from the surface of the membranes. To manually flush the system following the preceding steps:

1. The system must be running during the flushing procedure.
2. Fully open the concentrate valve
3. Allow the system to run for 10 to 20 minutes.
4. After 10 to 20 minutes, close the concentrate valve to its previous position, raising the operating pressure to 150 psi. Ensure the proper concentrate flow rate is going to the drain.
5. The system is now ready to operate.

## DRAINING THE SYSTEM FOR SHIPMENT

Prior to shipping or storing your system, the system should be cleaned with an appropriate cleaner, flushed with water, and protected from biological attack with an appropriate solution for membrane elements. The membrane housing(s) and plumbing lines of the system must be completely drained. Any water remaining in the plumbing of a system may freeze, causing serious damage. The party shipping or storing the system is responsible for any damage resulting from freezing.

To drain the system:

1. Disconnect the inlet, concentrate, pre-filter, and permeate plumbing.
2. Drain all water from the pre-filter cartridge housings by unscrewing the housings, removing the pre-filter cartridges, and drain the water from the housings.
3. Disconnect the tubing from the connector on the permeate and concentrate inlets and outlets.
4. Fully open the concentrate valve.
5. Drain the flow meters by disconnecting the tubing from the bottom fitting of each meter.
6. Allow the system to drain for a minimum of eight hours or until the opened ports quit dripping.
7. After draining is complete, reconnect all of the plumbing.



## TROUBLESHOOTING

If the system production declines or the system stops working, check the mechanical components for any visual problems. Listed below are the items to check for any visual problems. Listed below are the items to check for two of the most commonly encountered problem conditions: Low system pressure and abnormal permeate flow. Also refer to the following reverse osmosis troubleshooting matrix.

### Low System Pressure

Low system pressure occurs when sufficient feed water pressure and flow are not obtained. This causes the high-pressure reverse osmosis pump to cavitate or form bubbles. Failure to provide the proper feed will result in lower system pressure that may result in low production and poor rejection. Check the following components:

1. **Pump:** Isolate the pump and determine how much pressure can be achieved. This can be determined by checking the pump discharge pressure gauge at this point. If the system is not equipped with this gauge, disconnect the hose that runs from the pump to the pressure vessel. Install a pressure gauge. The pressure of the pump must reach at least 190 psi when the flow is restricted.
2. **Pre-Filter:** Check the differential in the pre-filter gauges to determine if the filter needs to be replaced. If the system is not equipped with these gauges, examine the pre-filter cartridge to make sure that it is not clogged and does not restrict feed flow to the pump. Replace, if necessary.
3. **Low Feed Water Flow Rate:** Determine that the system is getting a sufficient volume of feed water. Disconnect the feed water hose from the system and place it in a one gallon bucket. Measure the time it takes to fill the bucket to determine the feed flow. (Feed flow is measured in gallons per minute, so divide 1 gallon by the time in minutes to obtain the flow rate). Refer to the System Specifications for the required feed flow.
4. **Inlet Solenoid Valve:** Feed water enters the system through an automatic solenoid shut-off valve, which is normally closed. Ensure that the solenoid opens when the reverse osmosis pump starts. The system can be operated without the solenoid for troubleshooting. Remove the solenoid to see if it is contributing to the problem. Normally, cleaning the solenoid diaphragm will correct any malfunction of the solenoid.
5. **Electric:** Check to ensure that there are no electrical fuses blown and that all electrical connections are secure. Use a voltmeter to verify that the motor is getting sufficient power.
6. **Pressure Gauge:** Check for foreign matter on the gauge fitting. Remove any visible matter and replace the fitting. Verify that the tube is not pushed too far inside the fitting. This could restrict flow and cause an inaccurate display. If the fitting and tube are fine and the pressure gauge is still malfunctioning, the gauge should be replaced.
7. **Concentrate Control Valve:** The concentrate control valve may have a tear in the diaphragm. Remove the valve, inspect the diaphragm, and replace if necessary.

### Abnormal Permeate Flow

Permeate flow should be within 15% of the rated production, after correcting the feed water temperatures above or below 77°F. Check your permeate flow meter to determine the permeate flow rate. If the system does not have a permeate flow meter, measure the time it takes to fill a 1 gallon container then calculate the permeate flow rate at gallons per minute or gallons per day.

**NOTE:** To determine the temperature correction factor, locate the Temperature Correction Table in this User's Manual and follow the directions.



## TROUBLESHOOTING *CONTINUED*

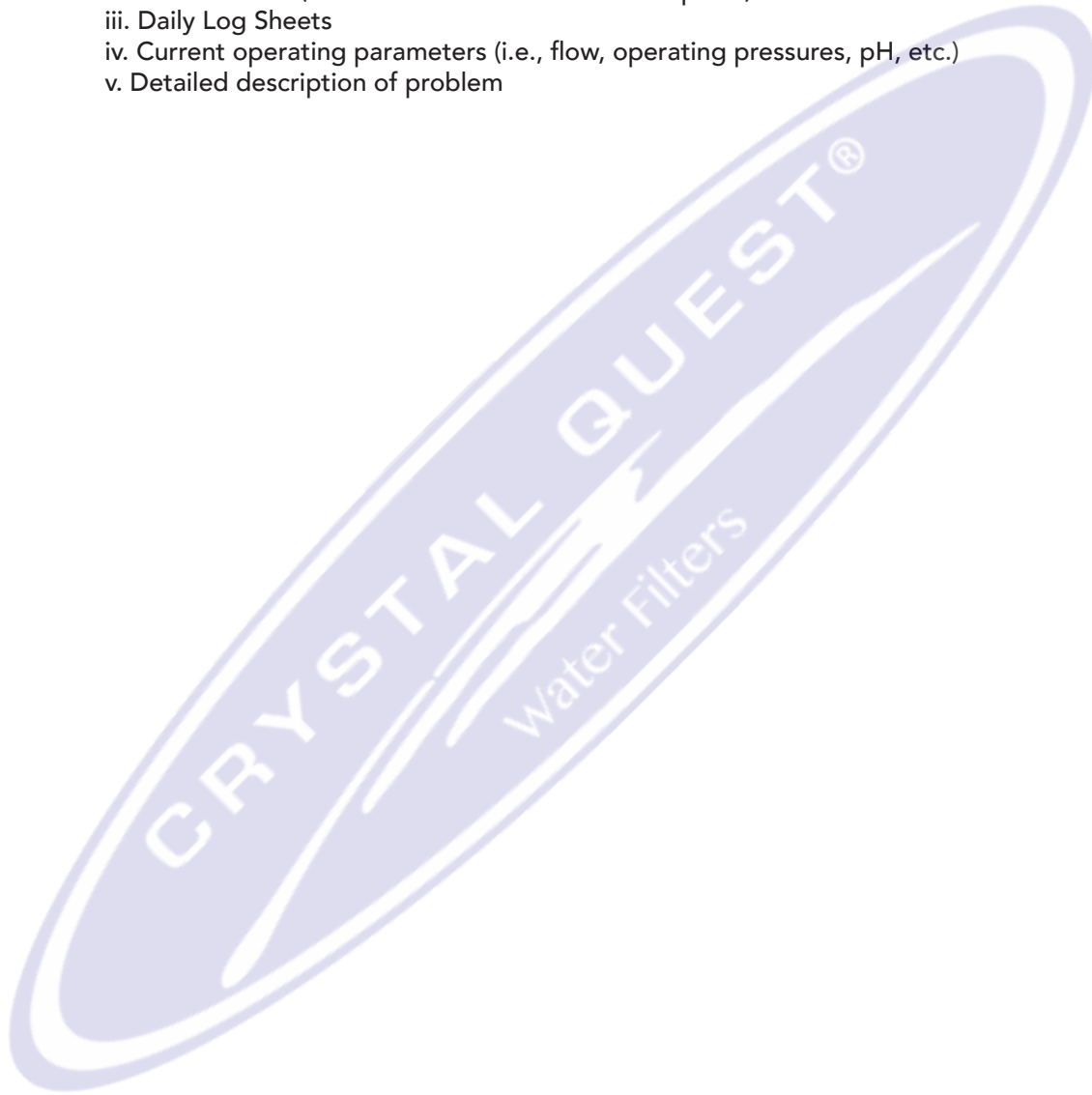
Symptoms			Location	Possible Causes	Verification	Corrective Action
Salt Passage	Permeate Flow	Pressure Drop				
Normal to Increased	Decreased	Normal to Increased	Predominately First Stage	Metal Oxide Fouling	Analysis of Metal Ions in Cleaning Solution.	Improve pretreatment to remove metals. Clean with Acid Cleaners.
Normal to Increased	Decreased	Increased	Predominately First Stage	Colloidal Fouling	SDI Measurement of Feed Water.	Optimize pretreatment for colloid removal. Clean with high pH anionic cleaners.
Increased	Decreased	Increased	Predominately First Stage	Scaling (CaSO <sub>4</sub> , CaSOS, BaSO <sub>4</sub> , SiO <sub>2</sub> )	Analysis of metal ions in cleaning solution by checking LSI of reject. Calculate max solubility of CaSO <sub>4</sub> , BaSO <sub>4</sub> , SiO <sub>2</sub> in reject.	Increase acid addition and antiscalant dosage for CaVOS and CaCO <sub>4</sub> . Reduce recovery. Clean with Acid Cleaners.
Normal to Moderate Increase	Decreased	Normal to Moderate Increase	Any Stage	Biological Fouling	Bacteria count in permeate and reject. Slime in pipes and pressure vessels.	Shock dosage of Sodium Bi-Sulfate. Continuous feed of Sodium Bi-Sulfate at reduced pH. Formaldehyde disinfection. Chlorination and de-chlorination. Replace cartridge filters.
Decreased or Slightly Increased	Decreased	Normal	Any Stage	Organic Fouling	Destructive Element Testing.	Activated Carbon or other pretreatment. Clean with high pH cleaner.
Increased	Increased	Decreased	Most Severe in First Stage	Chlorine Oxidation	Chlorine Analysis of feed water. Destructive element test.	Check Chlorine feed equipment and de-chlorination system.
Increased	Increased	Decreased	Most Severe in First Stage	Abrasion of membrane by Crystalline Material	Microscopic solids analysis of feed. Destructive element test.	Improve pre-treatment. Check all filters for media leakage.
Increased	Normal to Increased	Decreased	At Random	O-Ring Leaks, End or Side Seal Leaks	Probe test. Vacuum test. Colloidal material test.	Replace O-Rings. Repair or replace elements.
Increased	Normal to Low	Decreased	At Random	Recovery Too High	Check Flows and Pressure Against Design Guidelines.	Reduce the recovery rate. Calibrate and/or add sensors.



## SERVICE ASSISTANCE

If service assistance is required, take the following steps:

1. Call your distributor.
  - a. Prior to making the call, have the following information available:
    - i. Machine installation date
    - ii. Serial number (found on left-hand side of front panel)
    - iii. Daily Log Sheets
    - iv. Current operating parameters (i.e., flow, operating pressures, pH, etc.)
    - v. Detailed description of problem





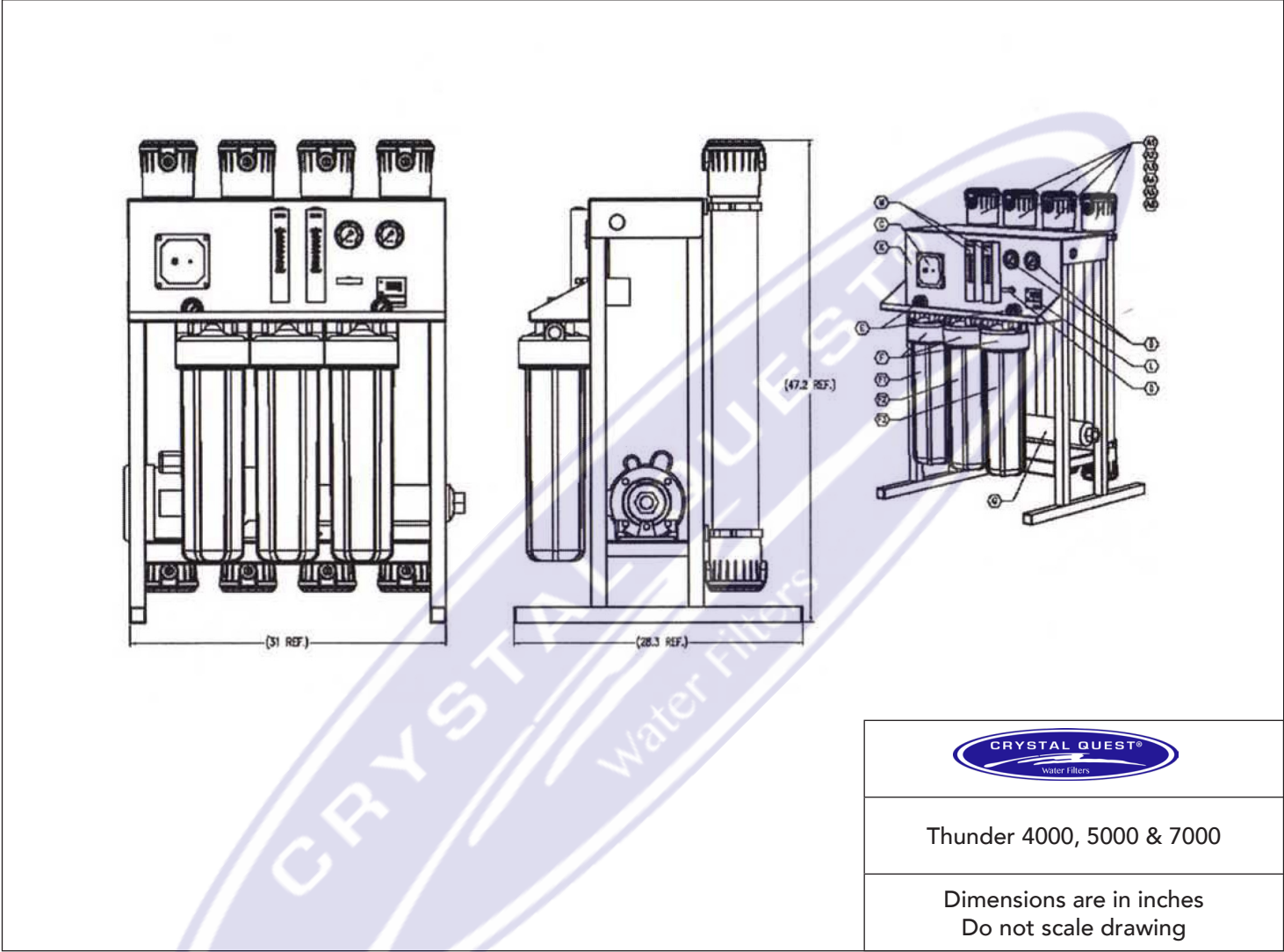



## OPERATION LOG

Company:	Date of Start-Up:
Location:	Date of Last Cleaning:
Week of:	Cleaning Formulation:
System Serial #:	

Date	
Time	
Hours of Operation	
Cartridge Filter Inlet Pressure (psi)	
Differential Pressure (psi)	
Permeate Pressure (psi)	
Feed Pressure (psi)	
Concentrate Pressure (psi)	
Differential Pressure (psi)	
Pump Discharge Pressure (psi)	
Permeate Flow (GPM)	
Concentrate Flow (GPM)	
Feed Flow (GPM)	
Recovery %	
Feed Temperature	
Feed Conductivity (mg/L)	
Permeate Conductivity (mg/L)	
Rejection %	
Feed pH	
Permeate pH	
Scale Inhibitor Feed (ppm)	
Acid Feed (ppm)	
Sodium Bisulfite Feed (ppm)	
Feed Water:	
Iron (mg/L)	
Free Chlorine (mg/L)	
Hardness (ppm CaCO <sub>3</sub> )	
Turbidity (NTU)	

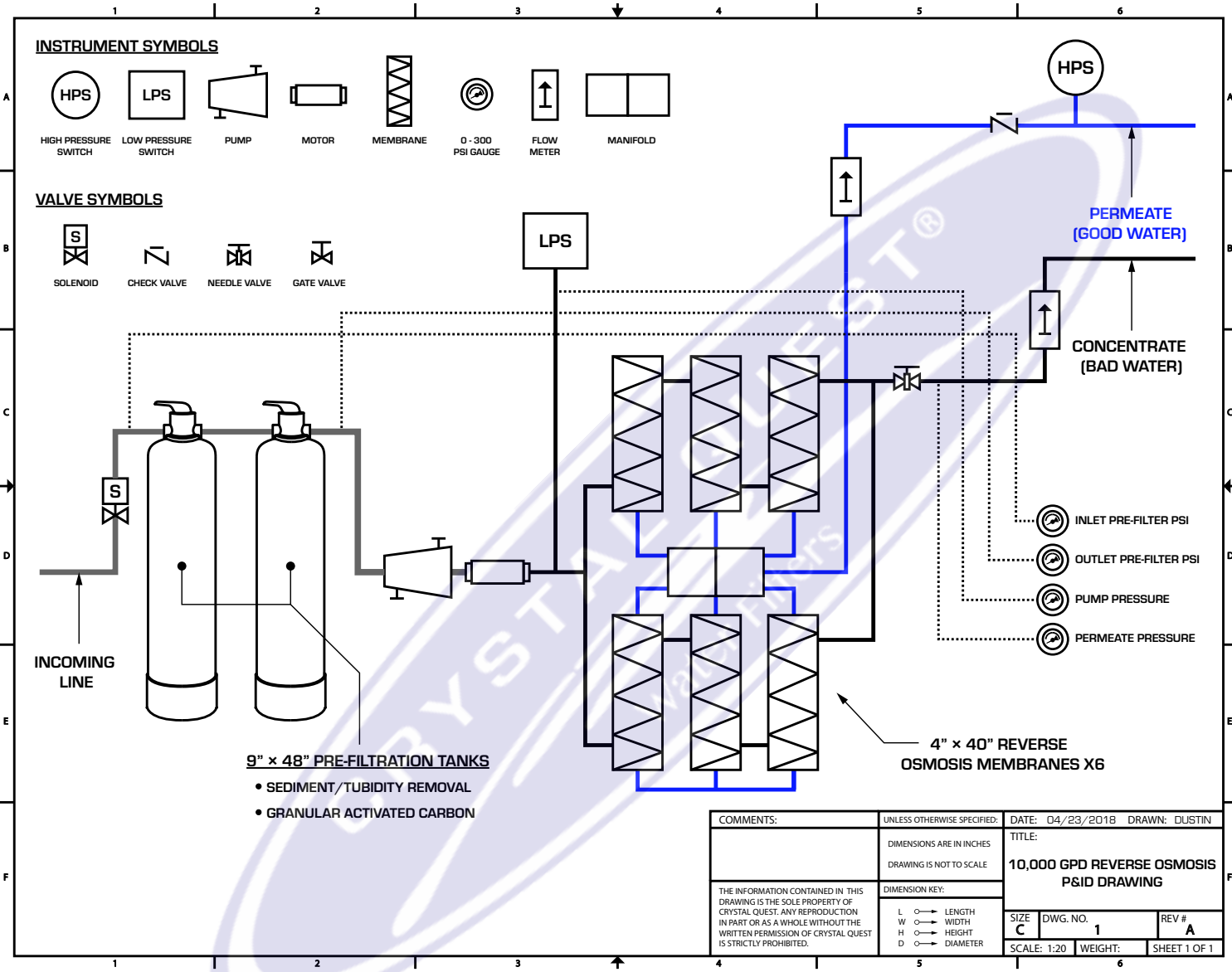
**TECHNICAL DRAWING**




<p>Thunder 4000, 5000 &amp; 7000</p>
<p>Dimensions are in inches Do not scale drawing</p>



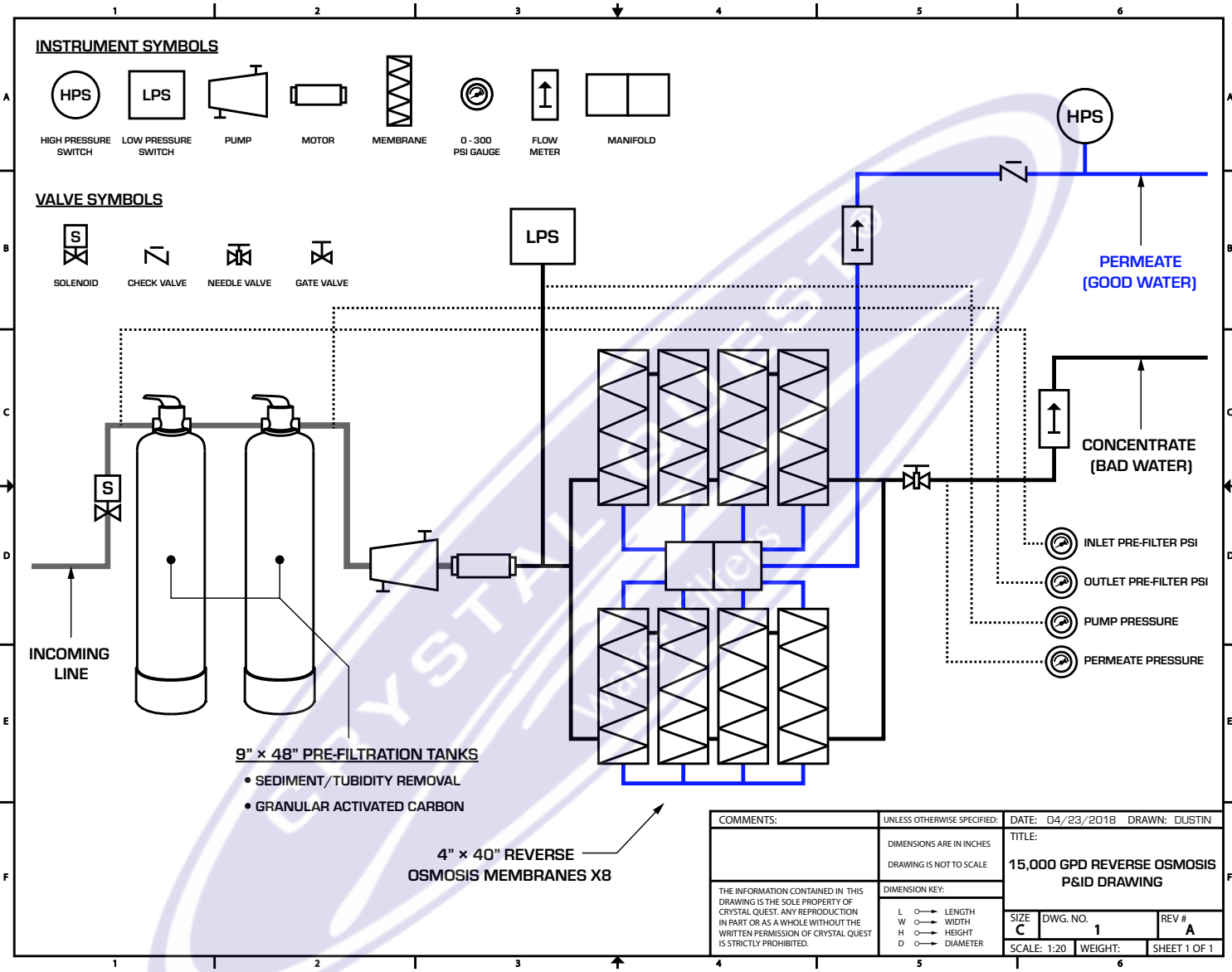
**PIPING & INSTRUMENTATION DIAGRAM - 10,000 GPD**



COMMENTS:	UNLESS OTHERWISE SPECIFIED:	DATE: 04/23/2018	DRAWN: DUSTIN
	DIMENSIONS ARE IN INCHES DRAWING IS NOT TO SCALE	TITLE: <b>10,000 GPD REVERSE OSMOSIS P&amp;ID DRAWING</b>	
THE INFORMATION CONTAINED IN THIS DRAWING IS THE SOLE PROPERTY OF CRYSTAL QUEST. ANY REPRODUCTION IN PART OR AS A WHOLE WITHOUT THE WRITTEN PERMISSION OF CRYSTAL QUEST IS STRICTLY PROHIBITED.	DIMENSION KEY:	SIZE	DWG. NO.
	L → LENGTH W → WIDTH H → HEIGHT D → DIAMETER	<b>C</b>	<b>1</b>
		REV #	<b>A</b>
		SCALE: 1:20	WEIGHT:
			SHEET 1 OF 1



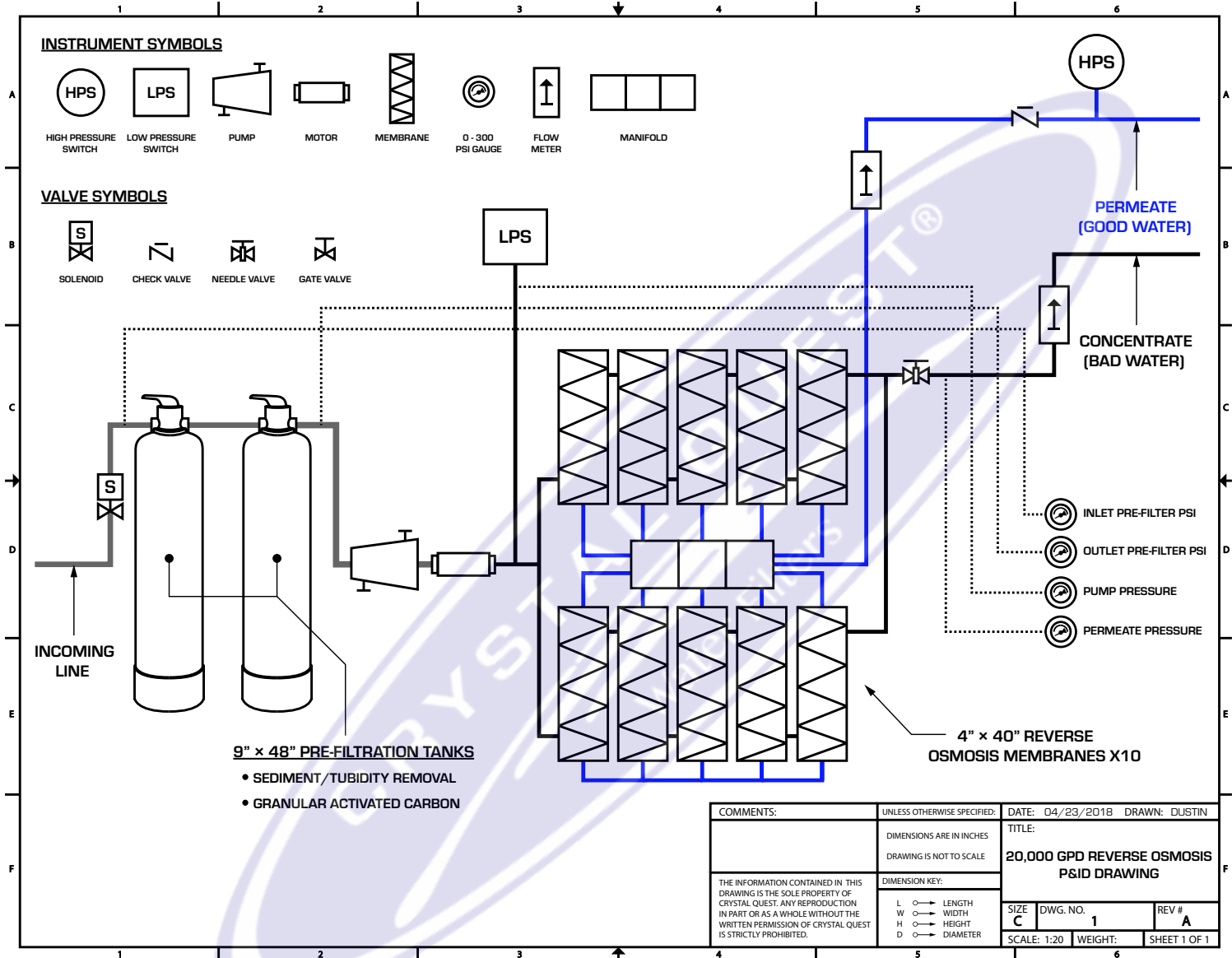
PIPING & INSTRUMENTATION DIAGRAM - 15,000 GPD



COMMENTS:	UNLESS OTHERWISE SPECIFIED:	DATE: 04/23/2018	DRAWN: DUSTIN
	DIMENSIONS ARE IN INCHES DRAWING IS NOT TO SCALE.	TITLE: <b>15,000 GPD REVERSE OSMOSIS P&amp;ID DRAWING</b>	
THE INFORMATION CONTAINED IN THIS DRAWING IS THE SOLE PROPERTY OF CRYSTAL QUEST. ANY REPRODUCTION IN PART OR AS A WHOLE WITHOUT THE WRITTEN PERMISSION OF CRYSTAL QUEST IS STRICTLY PROHIBITED.	DIMENSION KEY:	SIZE	DWG. NO.
	L → LENGTH W → WIDTH H → HEIGHT D → DIAMETER	<b>C</b>	<b>1</b>
		REV #	<b>A</b>
	SCALE: 1:20	WEIGHT:	SHEET 1 OF 1



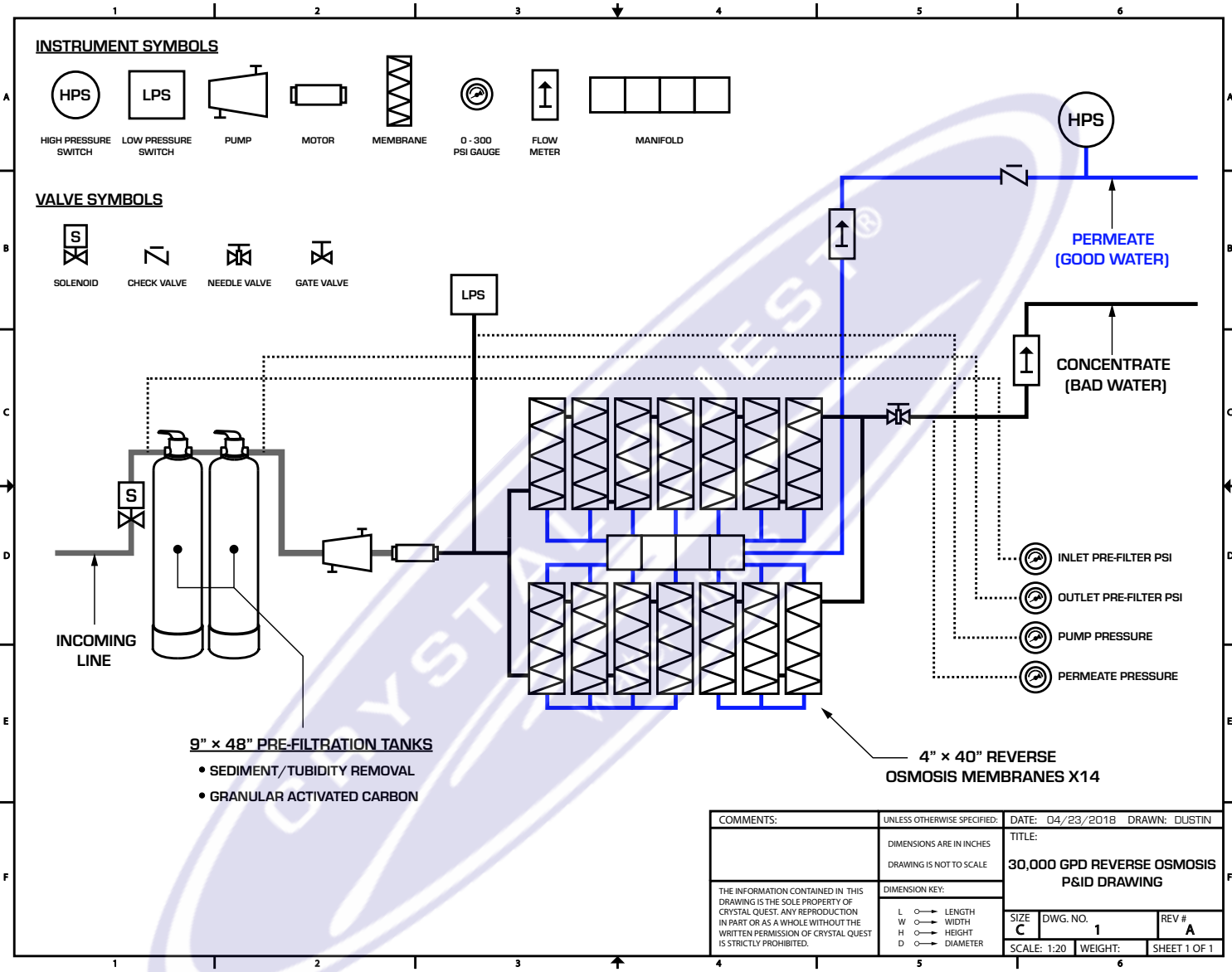
# PIPING & INSTRUMENTATION DIAGRAM - 20,000 GPD





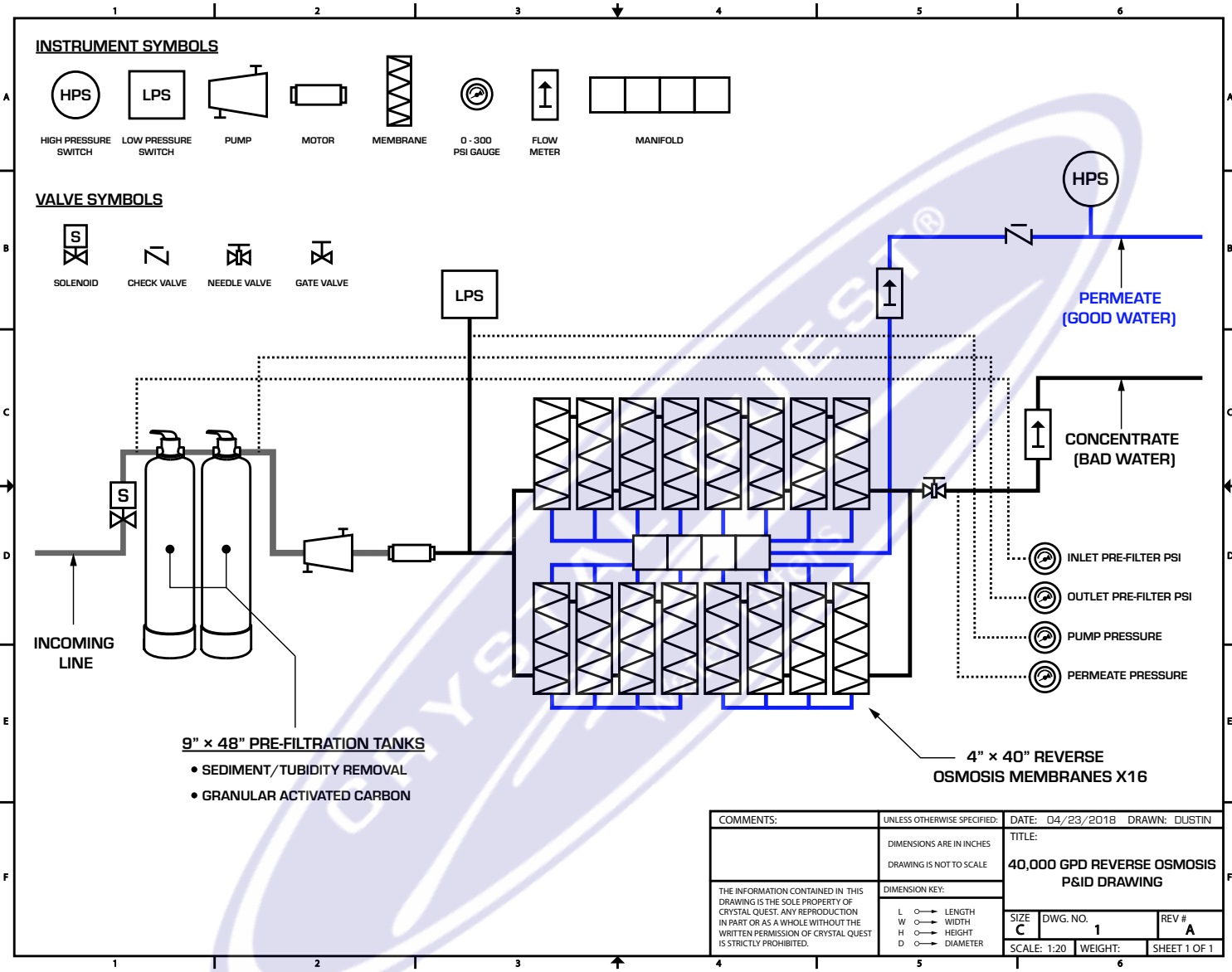


# PIPING & INSTRUMENTATION DIAGRAM - 30,000 GPD





PIPING & INSTRUMENTATION DIAGRAM - 40,000 GPD



COMMENTS:	UNLESS OTHERWISE SPECIFIED:	DATE: 04/23/2018	DRAWN: DUSTIN
	DIMENSIONS ARE IN INCHES DRAWING IS NOT TO SCALE	TITLE: <b>40,000 GPD REVERSE OSMOSIS P&amp;ID DRAWING</b>	
THE INFORMATION CONTAINED IN THIS DRAWING IS THE SOLE PROPERTY OF CRYSTAL QUEST. ANY REPRODUCTION IN PART OR AS A WHOLE WITHOUT THE WRITTEN PERMISSION OF CRYSTAL QUEST IS STRICTLY PROHIBITED.	DIMENSION KEY:	SIZE	DWG. NO.
	L → LENGTH W → WIDTH H → HEIGHT D → DIAMETER	<b>C</b>	<b>1</b>
		REV #	<b>A</b>
		SCALE: 1:20	WEIGHT: SHEET 1 OF 1



## TEMPERATURE CORRECTION FACTORS FOR MEMBRANE FLUX

TEMPERATURE		CA (Cellulose Acetate)	TF (Thin Film Composite)
Celsius	Fahrenheit		
10°	50°	1.468	1.711
11°	52°	1.429	1.648
12°	54°	1.391	1.588
13°	55°	1.355	1.530
14°	57°	1.320	1.475
15°	59°	1.286	1.422
16°	61°	1.253	1.371
17°	63°	1.221	1.323
18°	64°	1.190	1.276
19°	66°	1.160	1.232
20°	68°	1.132	1.189
21°	70°	1.104	1.148
22°	72°	1.076	1.109
23°	73°	1.050	1.071
24°	75°	1.025	1.035
25°	77°	1.000	1.000
26°	79°	0.988	0.971
27°	81°	0.976	0.943
28°	82°	0.964	0.915
29°	84°	0.953	0.889
30°	86°	0.942	0.863

To use: Simply multiply the actual flux to obtain temperature corrected flux.



## WARRANTY & GUARANTEE

### Warranty Terms

Subject to the terms and conditions set forth hereinafter, Seller warrants to the original purchaser (hereafter the "Buyer") that the products manufactured by Seller are free from defects in material and in workmanship for twelve (12) months from the Warranty Commencement Date (as defined below) only when used strictly in accordance with the applicable operating instructions and within the range of the operating conditions specified by Seller for each such product. This Warranty does not extend to equipment or components manufactured by others into which a Seller product has been incorporated or to equipment or components which have been incorporated into a Seller product but, if allowable, Seller hereby assigns, without warranty, to the Buyer its interest, if any, under any warranty made by the manufacturer of such equipment or component. This Warranty does not cover disposable items such as fuses, lamps, filters, cartridges, or other such disposable items, which must be replaced periodically under the normal and foreseeable operating conditions of the goods warranted hereby.

### Warranty Commencement Date

The Warranty Commencement Date for each Seller product shall be the later of the date of: (1) receipt by the Buyer, or (2) the date of installation at the Buyer's premises provided that such installation must occur within three (3) months of shipment from the Seller's manufacturing facility in California. In no event shall the Warranty Commencement Date exceed three (3) months from the shipment from the Seller's manufacturing facility. The Buyer shall provide proof of purchase in order to exercise rights granted under this Warranty. If requested by manufacturer, the Buyer must also provide proof of the installation date. Proof of installation shall be returned by Buyer to Seller within thirty (30) days after installation by virtue of supplying a Warranty Validation Card supplied with each Seller product fully completed and signed in ink by Buyer and the authorized installer of the product.

### Warranty Service

SELLER'S OBLIGATION UNDER THIS WARRANTY IS LIMITED TO THE REPAIR OR REPLACEMENT (AT SELLER'S SOLE DISCRETION) OF ANY PRODUCT, OR COMPONENT THEREOF, PROVED TO BE DEFECTIVE IN MATERIAL OR WORKMANSHIP WITHIN THE COVERED WARRANTY PERIOD.

The buyer, at the Buyer's risk and expense, shall be responsible for returning such product or component, only after obtaining a Return Goods Authorization (RGA) number from the Seller, arranging for freight prepaid, and in conformance with any special packaging and shipping instructions set forth on the operation documentation or RGA instructions, or as otherwise reasonably required, to the Seller's address set forth below, together with (1) RGA number issued by Seller at Buyer's request; (2) proof of purchase and, if necessary, proof of installation date; (3) a Return Good Authorization Form; (4) a description of the suspected defects; (5) the serial number of the Seller product alleged to be defective; and (6) a description of the type of water and pretreatment equipment which has been utilized in connection with the product, if any. Seller shall, in Seller's reasonable discretion, be the sole judge of whether a returned product or component is defective in material or workmanship. Required or replaced products or components shall be returned surface freight. In genuine emergency situations, the Seller will (at Seller's sole discretion) forward replacement parts to Buyer without waiting for authorized return of the questionable part(s). In such cases, Buyer will issue a purchase order or other payment guarantee prior to shipment. If the returned part is found to have been misused or abused, the defective part is not received by Seller within thirty (30) days; the Buyer will be invoiced for the replacement part(s) provided. This Warranty does not cover or include labor and/or travel to the Buyer's premise or location or any other location. Charges of \$1000 per day plus associated travel expenses will be incurred by the Buyer in providing the Warranty Service at any location other than Seller's main headquarters; that is if the Seller deems that the product is not covered by said Warranty. The Seller reserves the right to precondition such travel to Buyer's premises upon prepayment of Seller's anticipated costs of attending such premises.



## WARRANTY & GUARANTEE

### Voidability of Warranty

This Warranty shall be void and unenforceable as to any Seller product which has been damaged by accident, mishandling, abuse or has been repaired, modified, altered, disassembled or otherwise tampered with by anyone other than Seller or an authorized Seller service representative; or, if any replacement parts are not authorized by Seller have been used, or, the product has not been installed, operated and maintained in strict accordance and adherence with the operating documentation and manuals for such product. Any expressed warranty, or similar representation of performance set forth in the operation documentation for a reverse osmosis, nanofiltration, or ultrafiltration membrane incorporated into a Seller product shall be void and unenforceable unless the feed water requirements set forth in the operating documentation for such product are unequivocally and strictly adhered to.

### Limitations and Exclusions

THIS WARRANTY AND REMEDIES DESCRIBED HEREIN AND HEREIN ABOVE ARE EXCLUSIVE AND IN LIEU OF ANY AND ALL OTHER WARRANTY OR REMEDIES, EXPRESSED OR IMPLIED, INCLUDING WITHOUT LIMITATION, ANY IMPLIED WARRANTY OF MERCHANTABILITY OR FITNESS FOR A PARTICULAR PURPOSE. IN NO EVENT SHALL THE SELLER BE LIABLE FOR ANY CONSEQUENTIAL, INCIDENTAL OR OTHER SIMILAR TYPES OF DAMAGES, FOR DAMAGES FOR THE LOSS OF PRODUCTION OR PROFITS, OR INJURY TO PERSON OR PROPERTY. NO PERSON HAS ANY AUTHORITY TO BIND SELLER TO OTHER THAN WHAT IS SET FORTH ABOVE.

THIS WARRANTY GIVES THE BUYER SPECIFIC LEGAL RIGHTS AND THE BUYER MAY ALSO HAVE OTHER RIGHTS WHICH VARY FROM JURISDICTION TO JURISDICTION. THE PARTIES RECOGNIZE AND AGREE, THAT IN ALL RESPECTS THE LAWS OF THE STATE OF CALIFORNIA SHALL APPLY TO AND SHALL GOVERN ANY INTERPRETATION OR LEGAL SIGNIFICANCE OF THIS DOCUMENT.

NO WARRANTY OR OTHER LIABILITY OF SELLER TO BUYER UNDER THIS AGREEMENT OR OTHERWISE WILL IN ANY EVENT EXCEED THE COST OF REPLACEMENT OF THE APPLICABLE SELLER PRODUCT, PART, OR ACCESSORY THAT IS SUBJECT TO ANY BREACH OF SELLER'S WARRANTY. SELLER WILL NOT BE LIABLE FOR ANY DAMAGE TO ANY PROPERTY OF BUYER OR TO BUYER'S CUSTOMERS FOR ANY CONSEQUENTIAL, INCIDENTAL, OR ECONOMIC LOSS OR COMMERCIAL DAMAGE WHATSOEVER. REMEDIES HEREIN PROVIDED ARE EXPRESSLY MADE THE SOLE AND EXCLUSIVE REMEDIES FOR BREACH OF ANY WARRANTY OR OTHER OBLIGATION HEREUNDER EXPRESS OR IMPLIED OR FROM THE OPERATION OF LAW.

**KEEP THIS MANUAL FOR  
FUTURE REFERENCE AND  
UNIT MAINTENANCE**

Product design is subject to change without notice.

For further assistance contact your  
Crystal Quest® Dealer  
or visit us at [www.crystalquest.com](http://www.crystalquest.com)





## AUTHORIZED DISTRIBUTOR

Should service be required during or after the warranty period or should you have any questions regarding how to use your devices, please contact manufacturer's Technical Support Department Monday through Friday, 9 AM to 5 PM Eastern Time, or your authorized CRYSTAL QUEST dealer:



Mailing Address:

**FilterWater.com**

P.O. Box 968

Southampton, PA 18966

USA

<http://www.FilterWater.com>

Tel. +1 (800) 439-0263

Fax +1 (215) 354-0304

Email: [Sales@filterwater.com](mailto:Sales@filterwater.com)